



**West Kootenay Kennel Club Shows and Trials**  
**August 14, 15, 16 2015**  
**Castlegar Community Church**  
**1300 26th Street Castlegar, BC, V1N 4C9 Canada**  
**ALL EVENTS: OUTDOORS**



**The Lions Club concession will be on site each day offering breakfast and lunch.**



The West Kootenay Kennel Club is pleased to have

Scout Handling on Sat. Aug. 15, right after BIS

To enter a team...

Make cheques out to WKKC. Entry is \$5.

Closing Date: July 30.....Mail entries to

Avril Tattersall

33, 283 Lynnhire Road SE.

Calgary AB T2C 2C6

Email: [avril.tattersall@shaw.ca](mailto:avril.tattersall@shaw.ca)



Castlegar Veterinary Hospital  
 Dr. Kristy Dennison

We Offer...  
 Medical • Surgical • Diagnostic • Dental • Preventative Health Care  
 Prescription Foods for Your Family Pets

For appointments or emergencies call: **250-365-2344** 8 - 5 Monday to Friday  
 4340 Main Road - Castlegar

**1944 COLUMBIA AVENUE CASTLEGAR BC V1N 2W7**  
**250-365-8444**  
**PROUD HOST HOTEL FOR THE**  
**WEST KOOTENAY KC SHOWS AND TRIALS**  
**WHERE THE JUDGES STAY**

**ASK FOR WKKC RATES \$99**  
**GROUP RATE #240177**  
**PET FRIENDLY.**

**SALES\_CASTLEGAR@SANDMAN.CA**  
**WWW.SANDMANHOTELS.CA/HOTELS/CASTLEGAR**

**ACCOMMODATIONS**

<b>Quality Inn-Monty Carlo</b>	250-365-2177 (\$10. pet fee)
<b>Cozy Pines Motel</b>	250-365-5613 (No Pet Fee)
<b>Travelodge-Fireside Inn</b>	250-365-2128 (Pet Fee \$10./dog/night)
<b>Super 8</b>	250-365-2700 (4 Rooms. Pet Fee \$10./dog/night)
<b>CAMPsites</b>	Pass Creek Campground 250-304-4602

**OVERNIGHT EXHIBITOR PARKING 2015**

**NO RESERVATIONS: ALL WILL BE A FIRST COME-FIRST SERVED BASIS**

Exhibitors who wish to camp together must come in together. Hookups are not available.

Self contained vehicles only please. There are no showers available.

All vehicles must be parked within the boundaries of the rented site. There is 1 vehicle per site.

To protect the grass all vehicles parked in overnight parking must remain for the entire show. Extra vehicles to remain outside the fence.

Fee is \$50./weekend or \$20./day.

There is a \$10. damage deposit that will be returned to exhibitors leaving their campsite in the same condition as when they arrived.

Day tents \$5./day Day Parking \$5./day

All funds paid at the gate must in Canadian cash (no Cheques). We received several NSF cheques last year and this will be a strict policy.

We will refuse entries from anyone tendering a NSF cheque last year.

Access to the grounds will be available Thursday August 13 2015 after 12:00 noon. Please, no entries prior to this time. Vehicles must vacate 1 hour after BIS on Sunday. Thank-you

Please note:

If the weather turns nasty (raining) The gates will be closed and NO ONE will be allowed to drive unto the grounds after parking RV. Day parking will also have to walk to their sites so please be prepared.



JOIN US FOR FUN, FESTIVITIES AND RAFFLE DRAWS  
 Saturday Night after Best in Show only \$2.00/plate  
 variety of Salads, buns and butter, baked potato's, desserts  
 BYOM (bring your own meat) cutlery and plates

BBA's will be set up for use. Please purchase your tickets from the hospitality table. Friday or Saturday before 3:00 pm.

**Friday 7:00 pm**

**Mrs Marion Postgate (CKC Obedience Council representative) will be available at the rings for a discussion regarding the new (January 2015) classes offered at trials for both Obedience and Rally O**

**Rent a Ring is available on Friday only for those trialling, with a \$5. donation to the club for a 20 minute session. Some jumps and equipment will be on site with club members available to assist. Please book at the club table.**

# West Kootenay Kennel Club Judging Schedule

## Show 1

### Ring 1

MR MICHAEL LANCTOT (82)

#### Working [14]

9:00 am

1 Bernese Mount	0-1-0-0
3 Doberman Pin	0-0-0-2
	Ex 1-0
5 Great Dane	1-2-0-2
3 Newfoundland	2-1-0-0
1 Giant Schnauzer	0-0-0-1
1 Siberian Husky	1-0-0-0

**WORKING Group,**  
Best in Group, Puppy,  
Veteran, Owner Handled

#### Hound [7]

1 Basenji	1-0-0-0
1 Beagle	0-0-1-0
1 Drever	0-0-1-0
1 Finnish Spitz	0-0-1-0
3 Whippet	0-2-0-1

**HOUND Group,**  
Best in Group  
Owner Handled

#### Sporting [41]

8 Golden Retriever	1-2-4-1
9 Labrador Ret	1-2-2-3
	BP 0-1
4 NS Duck Tolling	1-2-1-0
4 Irish Setter	2-1-0-1
6 Am Cocker Sp	1-2-3-0
3 Brittany Spaniel	2-1-0-0
1 Clumber Spaniel	0-0-1-0
1 Eng Cocker Sp	1-0-0-0
1 Eng Springer Sp	0-1-0-0
4 Weimaraner	0-2-2-0

**SPORTING Group,**  
Best in Group, Puppy,  
Baby, Veteran, Owner Handled

#### Herding [20]

4 Aus Shepherd	2-2-0-0
1 Bearded Collie	0-1-0-0
4 Bel Shepherd	1-2-1-0
3 Rough Collie	2-0-0-0
	BP 0-1
1 Smooth Collie	0-1-0-0
2 German Shep	1-1-0-0
1 Iceland Sheep	0-0-1-0
4 Shetland Sheep	0-2-0-1
	BP 1-0

**HERDING Group,**  
Best in Group, Puppy,  
Baby, Owner Handled

#### Judge: M LANCTOT

Best Baby Puppy in Show  
Best Veteran in Show  
Best in Show  
Reserve Best in Show  
Best Puppy in Show  
Best Owner Handled in Show

### Ring 2

MRS PATRICIA LANCTOT (27)

#### Terrier [14]

9:00 am

1 Am Staffordshire	0-0-1-0
1 Bull Terrier	1-0-0-0
1 Cairn Terrier	0-0-1-0
1 Smooth Fox Tr	0-0-1-0
1 Manchester Tr	0-0-0-1

**TERRIER Group,**  
Best in Group,  
Veteran, Owner Handled

#### Non Sporting [3]

1 Ger Pinscher	0-0-1-0
2 Std Poodle	1-1-0-0

**NON SPORTING Group,**  
Best in Group, Puppy

#### Toy [19]

3 Cavalier K C S	0-2-0-1
1 Coton de Tulear	0-0-1-0
1 Havanese	0-0-1-0
1 Ital Greyhound	0-0-1-0
1 Min Pinscher	1-0-0-0
5 Papillon	0-3-1-1
	Ex 0-1
4 Pomeranian	1-1-0-0
	BP 0-2
3 Pug	0-2-1-0

**TOY Group,**  
Best in Group, Puppy,  
Baby, Veteran, Owner Handled

## Show 2

### Ring 1

MR MICHAEL LANCTOT (52)

#### Toy [19]

2:15 pm

3 Cavalier K C S	0-2-1-0
1 Coton de Tulear	0-0-1-0
1 Havanese	0-0-1-0
1 Ital Greyhound	0-0-1-0
1 Min Pinscher	1-0-0-0
6 Papillon	0-3-1-1
	Exh 0-1
4 Pomeranian	1-1-0-0
	BP 0-2
3 Pug	0-2-1-0

**TOY Group,**  
Best in Group, Puppy,  
Baby, Veteran,  
Bred by Exhibitor

#### Non Sporting [3]

1 Ger Pinscher	0-0-1-0
2 Std Poodle	1-1-0-0

**NON SPORTING GROUP**  
Best in Group, Puppy

#### Terrier [14]

1 Am Staffordshire	0-0-1-0
1 Bull Terrier	1-0-0-0
1 Min Bull Terrier	BP 0-1
1 Cairn Terrier	0-0-1-0
1 Smooth Fox Tr	0-0-1-0
1 Manchester Tr	0-0-0-1

**TERRIER Group,**  
Best in Group,  
Veteran, Bred by Exhibitor

### Ring 2

MRS PATRICIA LANCTOT (74)

#### Herding [21]

10:50 am

5 Aus Shepherd	2-3-0-0
1 Bearded Collie	0-1-0-0
4 Bel Shepherd	1-2-1-0
3 Rough Collie	2-0-0-0
	BP 0-1
1 Smooth Collie	0-1-0-0
2 German Shep	1-1-0-0
1 Iceland Sheep	0-0-1-0
4 Shetland Sheep	0-2-0-1
	BP 1-0

**HERDING Group,**  
Best in Group, Puppy,  
Baby, Bred by Exhibitor

#### Hound [7]

1 Basenji	1-0-0-0
1 Beagle	0-0-1-0
1 Drever	0-0-1-0
1 Finnish Spitz	0-0-1-0
3 Whippet	0-2-0-1

**HOUND Group,**  
Best in Group,  
Bred by Exhibitor

#### Working [14]

1 Bernese Mount	0-1-0-0
3 Doberman Pin	0-0-0-2
	Exh 1-0
5 Great Dane	1-2-0-2
3 Newfoundland	2-1-0-0
1 Giant Schnauzer	0-0-0-1
1 Siberian Husky	1-0-0-0

**WORKING Group,**  
Best in Group, Puppy,  
Veteran, Bred by Exhibitor

#### Sporting [41]

8 Golden Retriever	1-2-4-1
9 Labrador Ret	1-2-2-3
	BP 0-1
4 NS Duck Tolling	1-2-1-0
4 Irish Setter	2-1-0-1
6 Am Cocker Sp	1-2-3-0
3 Brittany Spaniel	2-1-0-0
1 Clumber Spaniel	0-0-1-0
1 Eng Cocker Sp	1-0-0-0
1 Eng Springer Sp	0-1-0-0
4 Weimaraner	0-2-2-0

**SPORTING Group,**  
Best in Group, Puppy,  
Baby, Veteran, Bred by  
Exhibitor

#### Judge: P LANCTOT

Best Baby Puppy in Show  
Best Veteran in Show  
Best in Show  
Reserve Best in Show  
Best Puppy in Show  
Best Bred by Exhibitor in Show

FRIDAY AUGUST 14 2015

# West Kootenay Kennel Club Judging Schedule

SATURDAY AUGUST 15 2015

## RING 1

**MR BILL WALKEY (134)**

### Hound [8]

9:00 am

1 Basenji	1-0-0-0
1 Beagle	0-0-1-0
1 Drever	0-0-1-0
1 Finnish Spitz	0-0-1-0
1 Irish Wolfhound	0-1-0-0
3 Whippet	0-2-0-1

**HOUSD Group**  
Best in Group, Bred by Exhibitor

### Sporting [37]

8 Golden Retriever	1-2-4-1
6 Labrador Ret	0-2-1-2
	BP 0-1
4 NS Duck Tolling	1-2-1-0
4 Irish Setter	2-1-0-1
5 Am Cocker Sp	1-2-2-0
3 Brittany Spaniel	2-1-0-0
1 Clumber Spaniel	0-0-1-0
1 Eng Cocker Sp	1-0-0-0
1 Eng Springer Sp	0-1-0-0
4 Weimaraner	0-2-2-0

**SPORTING Group**  
Best in Group, Puppy, Veteran  
Baby, Bred by Exhibitor

### Herding [15]

1 Bearded Collie	0-1-0-0
3 Bel Shepherd	0-2-1-0
3 Rough Collie	2-0-0-0
	BP 0-1
1 Smooth Collie	0-1-0-0
2 German Shep	1-1-0-0
1 Iceland Sheep	0-0-1-0
4 Shetland Sheep	0-2-0-1
	BP 1-0

**HERDING Group**  
Best in Group, Puppy,  
Baby, Bred by Exhibitor

### Terrier [6]

1 Am Staffordshire	0-0-1-0
1 Bull Terrier	1-0-0-0
1 Min Bull Terrier	BP 0-1
1 Cairn Terrier	0-0-1-0
1 Smooth Fox Tr	0-0-1-0
1 Manchester Tr	0-0-0-1

**TERRIER Group**  
Best in Group, Veteran  
Baby, Bred by Exhibitor

## RING 1

**Ring 1 following Terrier Group**  
Junior Handling  
Judge: TBA

Peewee, Junior Novice, Intermediate  
Novice, Senior Novice, Junior Open,  
Intermediate Open, Senior Open,  
Best Overall

## RING 1

**MR BILL WALKEY**

### Working [14]

1:00 pm

1 Bernese Mount	0-1-0-0
3 Doberman Pin	0-0-0-2
	Exh 1-0
4 Great Dane	1-2-0-1
3 Newfoundland	2-1-0-0
1 Giant Schnauzer	0-0-0-1
1 Siberian Husky	1-0-0-0

**WORKING Group**  
Best in Group, Puppy,  
Veteran, Bred by Exhibitor

### Toy [19]

2 Cavalier K C S	0-2-0-0
1 Coton de Tulear	0-0-1-0
1 Havanese	0-0-1-0
1 Ital Greyhound	0-0-1-0
1 Min Pinscher	1-0-0-0
6 Papillon	0-3-1-1
	Exh 0-1
4 Pomeranian	1-1-0-0
	BP 0-2
3 Pug	0-2-1-0

**TOY Group**  
Best in Group, Puppy, Veteran  
Baby, Bred by Exhibitor

### Judge: B WALKEY

Best Baby Puppy in Show  
Best Veteran in Show  
Best in Show  
Reserve Best in Show  
Best Puppy in Show  
Best Bred by Exhibitor in Show

## RING 2

**Ring 2 Noon 1200**  
JUVENILE SWEEPSTAKES

Mrs M Fedderly

3 Junior Puppy Male
3 Senior Puppy Male
2 Junior Puppy Female
2 12-18 Mo. Female
Best in Sweepstakes

### VETERAN SWEEPSTAKES

5 7 to 9 years
2 9 to 11 years
Best in Sweepstakes

## RING 2

**MRS MARION POSTGATE (20)**

### Non Sporting [3]

1:00 pm

1 Ger Pinscher	0-0-1-0
2 Std Poodle	0-1-1-0

**NON SPORTING Group**  
Best in Group, Puppy

## RING 4 RALLY O

**MRS MARION POSTGATE (18)**  
TRIAL 1

9:00 am

Walk thru  
4 Rally Excellent B  
Walk thru  
2 Rally Advanced B  
3 Rally Intermediate  
Walk thru  
3 Rally Novice B  
4 Rally Novice A

2 Exhibition Only

**MRS MARION POSTGATE (18)**  
TRIAL 2

following Trial 1

Walk thru  
3 Rally Excellent B  
Walk thru  
2 Rally Advanced B  
3 Rally Intermediate  
Walk thru  
4 Rally Novice B  
4 Rally Novice A

2 Exhibition Only

**\*\*Day of trial entries**, on a paper entry form, may be accepted no later than 1 hour before the start of the trial to be entered. Fee for Day of Entry is \$32./trial. Acceptance of the entry is at the discretion of the show secretary and obedience chair and subject to the influences of scheduling and amount of judges time available. This policy is applicable to Obedience and Rally O trials only.

**RING 5 OBEDIENCE**  
TRIAL 1  
**EVA OKEEFE (7)**

9:00 am

1 Open A  
3 Novice B  
3 Pre Novice

**EVA OKEEFE (6)**  
TRIAL 2

following Trial 1

1 Open A  
3 Novice B  
2 Pre Novice

## BBQ

### JOIN US FOR FUN, FESTIVITIES AND RAFFLE DRAWS

Saturday Night 5:00 pm only \$8.00/plate Variety of Salads, buns & butter, baked potatoes, desserts  
BYOM (bring your own meat) cutlery & plates BBQ's will be set up for use

Please purchase your tickets from the hospitality table Friday or Saturday before 3:00 pm

# West Kootenay Kennel Club Judging Schedule

SUNDAY AUGUST 16 2015

## RING 1 MRS WENDY MAISEY (99)

### Working [13]

8:00 am

1 Bernese Mount	0-1-0-0
3 Doberman Pin	0-0-2-0
	Exh 1-0
4 Great Dane	1-2-0-1
3 Newfoundland	2-1-0-0
1 Giant Schnauzer	0-0-0-1
1 Siberian Husky	1-0-0-0

### WORKING Group Best in Group, Puppy, Veteran, Owner Handled

#### Terrier [6]

1 Am Staffordshire	0-0-1-0
1 Bull Terrier	1-0-0-0
1 Min Bull Terrier	BP 0-1
1 Cairn Terrier	0-0-1-0
1 Smooth Fox Tr	0-0-1-0
1 Manchester Tr	0-0-0-1

### TERRIER Group Best in Group, Puppy, Veteran, Baby, Owner Handled

#### Herding [15]

1 Bearded Collie	0-1-0-0
4 Bel Shepherd	0-2-1-0
	BP 0-1
3 Rough Collie	2-0-0-0
	BP 0-1
1 Smooth Collie	0-1-0-0
2 German Shep	1-1-0-0
1 Iceland Sheep	0-0-1-0
4 Shetland Sheep	0-2-0-1
	BP 1-0

### HERDING Group Best in Group, Puppy, Baby, Owner Handled

#### Non Sporting [3]

1 Ger Pinscher	0-0-1-0
2 Std Poodle	0-1-1-0

### NON SPORTING Group Best in Group, Puppy

#### Hound [8]

1 Basenji	1-0-0-0
1 Beagle	0-0-1-0
1 Drever	0-0-1-0
1 Finnish Spitz	0-0-1-0
1 Irish Wolfhound	0-1-0-0
3 Whippet	0-2-0-1

### HOUND Group Best in Group, Owner Handled

## RING 1 MRS WENDY MAISEY

### Sporting [37]

8 Golden Retriever	1-2-4-1
6 Labrador Ret	0-2-1-2
	BP 0-1
4 NS Duck Tolling	1-2-1-0
4 Irish Setter	2-1-0-1
5 Am Cocker Sp	1-2-2-0
3 Brittany Spaniel	2-1-0-0
1 Clumber Spaniel	0-0-1-0
1 Eng Cocker Sp	1-0-0-0
1 Eng Springer Sp	0-1-0-0
4 Weimaraner	0-2-2-0

### SPORTING Group Best in Group, Puppy, Veteran, Baby, Owner Handled

## RING 1 MRS WENDY MAISEY (25)

### Toy [17]

2 Cavalier K C S	0-2-0-0
1 Coton de Tulear	0-0-1-0
1 Havanese	0-0-1-0
1 Ital Greyhound	0-0-1-0
1 Min Pinscher	1-0-0-0
4 Papillon	0-2-1-0
	Exh 0-1
4 Pomeranian	1-1-0-0
	BP 0-2
3 Pug	0-2-1-0

### TOY Group Best in Group, Puppy, Veteran, Baby, Owner Handled

**Judge: W Maisey**  
**Best in Show**  
 Best Baby Puppy in Show  
 Best Veteran in Show  
 Best in Show  
 Reserve Best in Show  
 Best Puppy in Show  
 Best Owner Handled in Show

## RING 4 RALLY O

### MRS EVA OKEEFE (13) TRIAL 3

8:00 am  
 Walk thru  
 3 Rally Excellent B  
 Walk thru  
 1 Rally Advanced B  
 2 Rally Intermediate  
 Walk thru  
 4 Rally Novice B  
 3 Rally Novice A

### EVA OKEEFE (9) TRIAL 4

following Trial 3  
 Walk thru  
 2 Rally Excellent B  
 Walk thru  
 1 Rally Advanced B  
 1 Rally Intermediate  
 Walk thru  
 3 Rally Novice B  
 3 Rally Novice A

### RING 5 OBEDIENCE MRS MARION POSTGATE (5) TRIAL 3

8:00 am  
 1 Open A  
 3 Novice B  
 1 Pre Novice

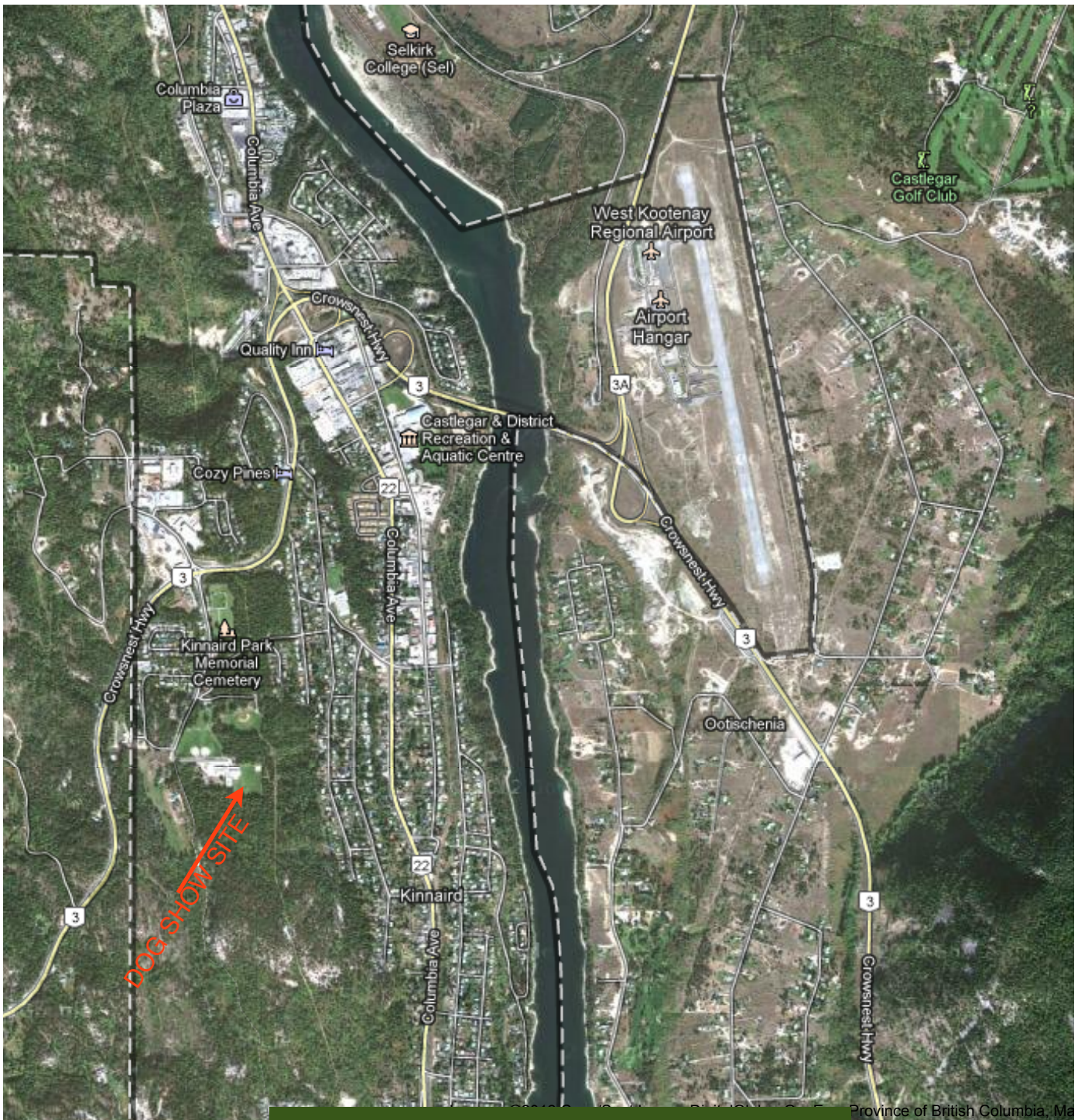
### MRS MARION POSTGATE (5) TRIAL 4

following Trial 3  
 1 Open A  
 3 Novice B  
 1 Pre Novice

**\*\*Day of trial entries**, on a paper entry form, may be accepted on the day of the trial, no later than 1 hour before the start of the trial to be entered. Fee for Day of Entry is \$32./trial. Acceptance of the entry is at the discretion of the show secretary and obedience chair and subject to the influences of scheduling and amount of judges time available. This policy is applicable to Obedience and Rally O trials only.

The Lions Club concession will be on site each day offering breakfast and lunch.





Province of British Columbia, Ma

**Castlegar Community Church  
DIRECTIONS TO WKKC 2015 DOG SHOW**

The location of the 2014 Dog Show is Castlegar Community Church within Castlegar, at the same location as last year, on 14th Avenue approximately 1 km off Highway 3.

**From Salmo** (Hwy. 3) follow Hwy. 3 signage to Grand Forks. This will take you across the Columbia River Bridge, then over the overpass in Castlegar. Continue about 1.4km west from the overpass, and turn LEFT on 14th Avenue (first road to the left).

**From Nelson** (Hwy. 3A), just past the Airport/Selkirk College junction take the exit to the right which will join with Highway 3 from Salmo. Follow the above directions to 14th Avenue.

**From Trail** (Hwy. 20), travel north past the A&W and follow the signs to Grand Forks, taking the left exit underneath the overpass west onto Hwy. 3. Travel about 1.4km west from the overpass and turn LEFT on 14th Avenue (first road to the left).

**From Grand Forks** (Hwy. 3), continue about 0.9km east past the "Welcome to Castlegar" sign and turn right onto 14th Avenue at the intersection (just past the start of 70 kmh speed zone). ONCE ON 14TH AVENUE, follow 14th Avenue south for about 1km, where it will curve to the left around playing fields and end at a large parking area and the school. This is the site of the Dog Show.