

OFFICIAL PREMIUM LIST



*Celebrating fifty years!*

**FRIDAY, NOVEMBER 29, 2024  
TO SUNDAY, DECEMBER 1, 2024**

**ORANGEVILLE FAIRGROUNDS** 247090 Side Road 5, Mono, ON L9W 6K5

**THESE SHOWS ARE DEDICATED TO LONG-TIME CLUB MEMBER CAROL STUBBS.**



### **3 LIMITED BREED SHOWS**

U.K. Breeds – Friday, November 29

Group 4 (Terrier) – Saturday, November 30

Group 1 (Sporting) – Sunday, December 1

**BEST OWNER-HANDLER – \$500** – Saturday

**BABY PUPPY CLASSES** – All three days (all-breed shows only)

**BOOSTERS** – German Shorthaired Pointer, Saluki, Doberman Pinscher, Great Pyrenees, Leonberger, Cavalier King Charles Spaniel, Yorkshire Terrier

**JUNIOR HANDLING** – Saturday

**SNACK BAR ON SITE • ALL RINGS WILL BE DOUBLE MATTED**

**ENTRIES CLOSE:  
WEDNESDAY, NOVEMBER 13, 2024, 8 P.M. (ET)**

To comply with instructions issued by the Canadian Kennel Club we will be unable to accept any entry reaching our Show Secretary after that date and time. These shows held under The Canadian Kennel Club rules. (Indoors)

---

**Club Officers**

**President**  
Gord Hufnagel

**Vice President**  
Denice Langley

**Secretary**  
Kim Birch

**Treasurer**  
Patty Milton

**Directors**  
Dannielle Adams  
Devon Hawkins  
Deb Hayes

---

**Show Officials**

**Show Chairperson**  
Gord Hufnagel

**Show Superintendent & Secretary**  
MJN Show Services  
33 Devonglen Drive  
Kitchener, ON N2E 1Z6  
(519) 568-8582 www.  
mjnshowservices.com

**Booth Inquiries**  
Kim Birch  
kim.birch@sympatico.ca

**Judges' Chair**  
Carol Hufnagel

**Facilities Management**  
Gord Hufnagel

**Junior Handling Chair**  
Denice Langley

**Ring Décor**  
JoAnne Pringle

**Sponsorship & Trophy Chair**  
Gord Hufnagel

**Show Photographer**  
Anne Rasz Photography  
P.O. Box 224 (Milton)  
Milton, Ontario L9T 3Z2  
www.anneraszphotography.com  
annerasz@bell.net

**Show Veterinarian**  
Graham Animal Hospital  
98 Trafalgar Rd N  
Hillsburgh ON N0B 1Z0  
(519) 855-6439  
(905) 951-4909 (after hours)

---

**Judges**

**Jeremy Browne**, Ontario  
**Jamie Hubbard**, Indiana, US  
**Ann Ingram**, Ireland  
**Colm Beattie**, Ireland

**Douglas Johnson**, Indiana, US  
**Richard Powell**, Pennsylvania, US  
**Rosemary Shoreman**, Ontario  
**Robert Shreve**, Colorado, US

---

**CKC Information**

The Canadian Kennel Club  
5397 Eglinton Ave. W., Ste 101  
Etobicoke, ON M9C 5K6  
Phone: (416) 675-5511

**CKC Director**

**Conformation Representative**

**Junior Handling Representative**

Mr. Jeff Cornett  
Executive Director  
ED@ckc.ca  
Hours: 9 a.m. - 5 p.m. M - F

Marc Ralsky  
zone7director@ckc.ca

Kristen Francis

Mary Vanderburgh

*Special thanks to Suzanne Gardner Flowers for the arrangements for the Photographer's Booth and the Caledon Kennel Association Booth. We look forward to your lovely arrangements every year.*



## 2024 JUDGING ASSIGNMENTS

Group	Friday, November 29	Saturday, November 30	Sunday, December 1
1	<b>Ann Ingram*</b> <b>Colm Beattie*</b>	Jamie Hubbard*	Richard Powell*
2	Rosemary Shoreman*	Douglas Johnson*	<b>Ann Ingram*</b> <b>Colm Beattie*</b>
3	Rosemary Shoreman*	<b>Ann Ingram*</b> <b>Colm Beattie*</b>	Robert Shreve*
4	<b>Ann Ingram*</b> <b>Colm Beattie*</b>	Richard Powell*	Robert Shreve*
5	<b>Ann Ingram*</b> <b>Colm Beattie*</b>	Douglas Johnson*	Richard Powell*
6	Robert Shreve*	<b>Ann Ingram*</b> <b>Colm Beattie*</b>	Douglas Johnson*
7	Rosemary Shoreman*	Robert Shreve*	<b>Ann Ingram*</b> <b>Colm Beattie*</b>
BIS, RBIS BPIS, BBPIS	Rosemary Shoreman	<b>Ann Ingram</b> <b>Colm Beattie</b>	Robert Shreve

*\* denotes group judging*

### OWNER-HANDLER COMPETITION

**Saturday, November 30 | Judge: Richard Powell, Pennsylvania**

#### Best Owner-Handler in Show: Rosette & \$500

In order to participate, exhibitors MUST check off the Owner-Handler box on the entry form. Dogs must be Owner-Handled throughout the competition.

***Procedure for judging:***

The owner-handler judging follows the same process as regular breed judging. For example, if the Best of Breed dog is owner-handled, they are automatically awarded Owner-Handled Best of Breed. If further judging is required, it will take place after regular breed judging. Owner-Handler Best of Breed winners will receive a flat ribbon.

At the Group level, if no owner-handled dog places first to fourth in the group, all owner-handled Best of Breed dogs will be called back into the ring. Only Group 1st will be awarded. The winner will receive a rosette.

Again, if the Best in Show dog is owner-handled, they will be automatically awarded Owner-Handled Best in Show.

*Please note: Professional handlers, assistants, or household members of current handlers may not compete.*



# LIMITED BREED SHOWS

(No Baby Puppy Classes)

## U.K. BREEDS

Friday, November 29, 2024

---

### Judge / Assignment

Jeremy Browne, Ontario

All Official Classes | All Breeds & Groups

*PLEASE NOTE: Any awards after Best of Breed will be considered unofficial and do not count in the calculation of championship or Top Dog points.*

---

### Eligible Breeds

**Group 1: Sporting** – Pointer, Retrievers (Curly-coat, Flat-coat, Golden), Setters (English, Gordon, Irish, IR&W), Spaniels (Clumber, English Cocker, English Springer, Field, Irish Water, Sussex, Welsh Springer)

**Group 2: Hound** – Beagle, Bloodhound, Deerhound (Scottish), Foxhound (English), Greyhound, Harrier, Irish Wolfhound, Otterhound, Whippet

**Group 3: Working** – Bullmastiff, Mastiff

**Group 4: Terrier** – Airedale, Bedlington, Border, Bull Terrier, Bull Terrier (Miniature), Cairn, Dandie Dinmont, Fox Terrier (Smooth), Fox Terrier (Wire), Glen of Imaal, Irish, Kerry Blue, Lakeland, Manchester, Norfolk, Norwich, Parson Russell, Russell, Scottish, Sealyham, Skye, Soft-Coated Wheaten, Staffordshire Bull, Welsh, West Highland White

**Group 5: Toy** – Cavalier King Charles Spaniel, English Toy Spaniel, Toy Manchester Terrier, Yorkshire Terrier

**Group 6: Non-Sporting** – Bulldog

**Group 7: Herding** – Bearded Collie, Border Collie, Collies (Rough & Smooth), Old English Sheepdog, Shetland Sheepdog, Welsh Corgis (Cardigan & Pembroke)

Each group to be judged following the last breed in that group. Only group winners will compete for Best in Limited Breed Show and Best Puppy in Limited Breed Show.

---

### Trophy List

Through the generosity of the Caledon Kennel Association, the following will be offered: A rosette and prize for Best in Limited Breed Show and Best Puppy in Limited Breed Show. A rosette will be offered for first in each group and best puppy in each group.



# LIMITED BREED SHOWS

*continued*

## GROUP 4 – TERRIER BREEDS

Saturday, November 30, 2024

---

### Judge / Assignment

**Rosemary Shoreman, Ontario**

All Official Classes | All Breeds & Group Level

*All Official Classes (CKC points awarded for group placements)*

---

### Trophy List

Through the generosity of the Caledon Kennel Association, the following will be offered: A rosette and prize for Best in Limited Breed Show and Best Puppy in Limited Breed Show. Rosettes will also be offered for Group 1st through Group 4th in Limited Breed Show.

## GROUP 1 – SPORTING BREEDS

Sunday, December 1, 2024

---

### Judge / Assignment

**Douglas Johnson, Indiana, US**

*All Official Classes (CKC points awarded for group placements)*

---

### Trophy List

Through the generosity of the Caledon Kennel Association, the following will be offered: A rosette and prize for Best in Limited Breed Show and Best Puppy in Limited Breed Show. Rosettes will also be offered for Group 1st through Group 4th in Limited Breed Show.

## BOOTH RENTALS

\$75 for a 10' x 10' booth for the weekend.

With Christmas just around the corner, this is a perfect opportunity to reach those last-minute shoppers!

To reserve your booth space, please contact Kim Birch: (416) 745-1856 or [kim.birch@sympatico.ca](mailto:kim.birch@sympatico.ca)



## Trophy List

Through the generosity of Pro Plan, the Caledon Kennel Association and our sponsors, we are pleased to offer prizes and rosettes for the following awards at each show:



Best in Show	Food & Prize
Reserve Best in Show	Food & Prize
Best Puppy in Show	Food & Prize
Group 1st in each Group	Food & Prize
Best Puppy in each Group	Food & Prize

### Best in Show

Show photo donated by *Anne Rasz Photography*



### Best in Show

Rosette and shadow box donated by *Deja Vu Diner*



### FRIDAY

BIS	MacMaster & Judi Orsi	\$350 & Rosette
RBIS	Caledon Kennel Association	\$100 & Rosette
BPIS	Pivotal Solutions	Trophy & Rosette
BBPIS	In memory of Carol Stubbs	Prize & Rosette

### SATURDAY

BIS	Graham Animal Hospital & Darya Kutcherenko ( <i>Apple Garden Chihuahuas</i> )	\$350 & Rosette
RBIS	Darya Kutcherenko ( <i>Apple Garden Chihuahuas</i> )	\$100 & Rosette
BPIS	Pivotal Solutions	Trophy & Rosette
BBPIS	In memory of Carol Stubbs	Prize & Rosette



### SUNDAY

BIS	Theresa & Eric Franz ( <i>Justatitch Yorkies, in memory of Edie Ovens, Rusticpride</i> ) & Judi Orsi	\$350 & Rosette
RBIS	Caledon Kennel Association	\$100 & Rosette
BPIS	Pivotal Solutions	Trophy & Rosette
BBPIS	In memory of Carol Stubbs	Prize & Rosette



**SATURDAY – Best Owner-Handler Competition \$500**  
Sponsored by *Graham Animal Hospital*

---

## Boosters

The following clubs will support the entries and consider the classes for the Breed as their Booster. The Caledon Kennel Association will donate Rosettes for Best of Breed, Best of Opposite, Best of Winners, Winners Dog, Winners Bitch and Best Puppy.

### **GERMAN SHORTHAIRED POINTER CLUB OF CANADA** **Saturday, November 30, 2024 – Judge: Jamie Hubbard**

A prize will be offered for each of the following: Best of Breed, Best of Opposite Sex, Best of Winners, Winners Dog, Winners Bitch, Select Dog, Select Bitch, Best Puppy, Best Baby Puppy.

### **SALUKI CLUB OF CANADA** **Sunday, December 1, 2024 – Judge: Ann Ingram Colm Beattie**

A prize will be offered for each of the following: Best of Breed, Best of Opposite Sex, Winners Dog, Winners Bitch, Best Puppy.

### **GREATER MID-ONTARIO DOBERMAN FANCIERS** **Sunday, December 1, 2024 – Judge: Robert Shreve**

A prize will be offered for each of the following: Best of Breed, Best of Opposite Sex, Winners Dog, Winners Bitch, Best Puppy.

### **GREAT PYRENEES CLUB OF SOUTHERN ONTARIO** **Saturday, November 30, 2024 – Judge: Ann Ingram Colm Beattie**

A prize will be offered for each of the following: Best of Breed, Best of Opposite Sex, Best of Winners, Winners Dog, Winners Bitch, Select Dog, Select Bitch, Best Puppy.

### **LEONBERGER CLUB OF CANADA** **Saturday, November 30, 2024 – Judge: Ann Ingram Colm Beattie**

A prize will be offered for each of the following: Best of Breed, Best of Opposite Sex, Best of Winners, Winners Dog, Winners Bitch, Select Dog, Select Bitch, Best Puppy, Best Baby Puppy.

### **CAVALIER FANCIERS OF SOUTHERN ONTARIO** **Sunday, December 1, 2024 – Judge: Richard Powell**

A prize will be offered for each of the following: Best of Breed, Best of Opposite Sex, Winners Dog, Winners Bitch, Best Puppy.

### **CANADIAN NATIONAL YORKSHIRE TERRIER CLUB** **Saturday, November 30, 2024 – Judge: Douglas Johnson**

A prize will be offered for each of the following: Best of Breed (\$50), Best of Opposite Sex (\$25), Best of Winners (\$40), Winners Dog (\$25), Winners Bitch (\$25), Select Dog (\$25), Select Bitch (\$25), Best Puppy (\$25), Best Baby Puppy (\$25).

## **CORRECTING SHOW RESULTS – NEW FOR 2024**

**Section 9.9** The CKC will not consider a request for any corrections to results if received more than **90 DAYS** following the date(s) of the event(s).



---

## Our Judges

### **COLM BEATTIE, IRELAND**



I am a second generation exhibitor and breeder. My first breed was Shih Tzu and made up many dogs as champions. In 1982 I discovered American Cocker Spaniels which I have been breeding and showing until 2019. During that time I have made up numerous champions, group winners and BIS winners. I have also made champions in Hungarian Vizsla and along with my wife Rita, Yorkshire Terrier and Bichon Frisé. I am now showing a Lhasa Apso who has just gained his title at the age of 18 months winning group 9 along the way.

In Judging terms I judge all breeds under FCI rules. I have judged across the world including Canada, Australia, New Zealand and of course Europe. I award CC's under Kennel Club London rules in American Cocker Spaniels and Cocker Spaniels. This is my third time to judge in Canada and am very much looking forward to it.

### **JEREMY BROWNE, ONTARIO**



Jeremy and his wife Vicki have been showing and breeding dogs for 45 years. Byeyo Kennels, established in 1975, has produced or owned over 100 conformation champions. Both our Australian Cattle Dogs and our past Alaskan Malamutes have excelled in the show ring with Multiple Best in Show, Reserve Best in Show, Best Puppy in Show and Best Baby Puppy in Show winners along with two National Specialty breed winners. Besides conformation shows, Byeyo dogs have delved into agility, obedience, scent detection and herding.

Jeremy is the Past President of the Forest City Kennel Club and is currently President of the London Canine Associate (Canada's oldest kennel club). He is also the Vice-President of the Cattle Dog Club of Canada.

A CKC conformation judge since 1994, Jeremy has judged in England, Italy, Spain, the U.S. and Columbia.

### **JAMIE HUBBARD, INDIANA**



Jamie was born in Australia and began in the sport of purebred dogs at the age of nine. His parents were breeders of Basset Hounds; however, Jamie's success would later come in American Cocker Spaniels and English Setters. In those breeds, he owned and/or bred multiple Best in Show-winning dogs, including Best in Shows at the Melbourne Royal and Sydney Royal shows. Jamie moved to the U.S. in 2014, and along with his partner, breed various spaniel breeds under the world-renowned Clussexx kennel name.

### **DOUG JOHNSON, INDIANA**



Breeding under the world-famous Clussexx prefix, Doug Johnson has produced more than 250 AKC champions. Dogs from his kennel have won more than 175 Best in Show awards and 18 National Specialties across four breeds. Mr. Johnson holds the distinct honour of producing two Westminster Best in Show winners, and he is the only breeder of Westminster Best in Show winners in two different breeds. He is approved to judge five groups in the AKC system; all Sporting, Hound, Working, Toy and Non-Sporting. He has had the privilege of



---

## Our Judges

*continued*

judging at some of the most prestigious shows in the AKC system. A founder in the Canine Conservation movement, Mr. Johnson strives to be a voice for all breeders who work tirelessly to produce and promote their breed of choice. He believes, "Advocating for dogs is a passion, but also a responsibility to ensure the successful longevity of unique breeds. Together, we must continue to foster the best breeding practices to keep breeds from extinction."



### **RICHARD POWELL, PENNSYLVANIA**

Richard Powell has been involved in show dogs most of his life, beginning with English Cockers and English Setters in his native England. He came to California in 1976 and decided to pursue a career in terriers, working for many renowned terrier handlers.

When he and his wife Sue decided to go into the handling business they moved East and bought a boarding kennel and small farm. As a handler Mr. Powell showed many breeds, including breeding and showing Welsh, Cairn, Norfolk and Wire Fox Terriers. Mr. Powell is licensed to judge the Sporting and Terrier groups, Dachshunds, and Giant and Standard Schnauzers. He is presently working on the Toy breeds.



### **ROSEMARY SHOREMAN, ONTARIO**

Rosemary, along with her late husband Michael, has been active in the sport of breeding, showing and performance events under the Roschel prefix since 1970. Over the decades, Roschel has produced several Canadian and American all-breed Best in Show, Group and National-winning Weimaraners and Border Terriers.

As founding members of the Border Terrier and Weimaraner national clubs, and strong proponents of form following function, the Shoremans were instrumental in organizing the first Field Dog test and the second Earthdog test held in Canada. Rosemary has been active in all-breed clubs, including our very own Caledon Kennel Association, where she has served as the club's Treasurer and Show Chair. She was also a member of the CKC's Strategic Planning Committee.

As a judge, Rosemary has travelled extensively and judged at many prestigious venues, including Westminster.



### **ROBERT SHREVE, COLORADO**

I was raised in Sioux Falls, South Dakota, with a Smooth Fox Terrier as my best friend. Shortly after I graduated from college one of my fraternity brothers offered me a German Shepherd puppy. In 1968, my children decide that the Shepherd was too big for doll clothes and they wanted a smaller dog, so for our 10th anniversary we purchased a West Highland White Terrier. In the fall of 1968, we drove 350 miles to Rapid City, South Dakota, to exhibit at our first AKC point show. A year later our eldest daughter was given a Wire Fox Terrier. We bred and showed Westies and Wires until the mid '90s when I was approved for the second group.

---

## Our Judges

*continued*

My wife and I joined Greeley Kennel Club two weeks after we bought our first Westie. I was elected President in 1971 and served as president on five occasions for a total of 21 years. In 1982, I was elected to the Board of Directors of the West Highland White Terrier Club of America and served two three-year terms. I was granted approval to judge Fox Terriers and West Highlands on April 14, 1978. Currently I am approved to judge the Sporting, Working, Terrier, Herding and Non-Sporting Groups, plus 10 Hounds and 3 Toys.

I graduated from the University of Minnesota with a B.A. in Art and Architecture and a Masters in Architecture. In 1967 I accepted a position as department head for an architectural/engineering firm in Greeley, Colorado, and in 1979 I and eight others purchased the firm. In 1993 I left the firm to open an architectural office in Greeley that I continue to work in today.

---

## Junior Handling

### **Saturday, November 30, 2024**

*Held under CKC Rules.*

*Judge to be announced the day of the show.*

Pee Wee	4 – 6 yrs. (non-competitive)
Junior	7 – 10 yrs. (Novice and Open)
Intermediate	11 – 14 yrs. (Novice and Open)
Senior	15 – up to but not incl. 18 yrs. (Novice and Open)
Best Overall	(excluding Pee Wee)

All dogs must be entered in one of the Official Classes or Exhibition Only on the day of competition.

Entry to be made at the show.

Complete rules will appear in the Show Catalogue.

Dogs being used in the competition must be of appropriate size and temperament for the Junior Handler. If Pee Wee handler cannot lift dog, it is not appropriate in size for the competitor.

Prizes donated by Best in Show Supplies:

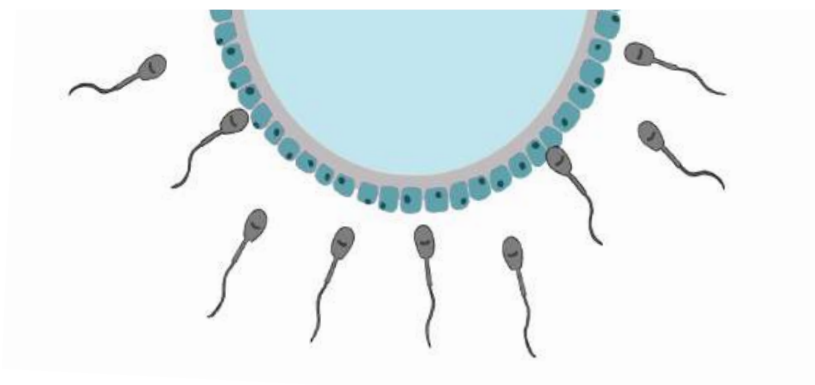
**1st in each Class**

**Best Overall Junior**

**Gift Bags** for each Junior, donated by Denice Langley.

Rosettes and Ribbons donated by MJN Show Services.

These shows are a public event, candid photos and/or videos may be taken on these premises. Such images may be published in printed or digital form without your consent. By entering these dog shows you waive all rights to such images and agree to relieve the Caledon Kennel Association or any persons or organizations associated with these shows of any responsibility in their distribution or reproduction.



# Graham Animal Hospital

## Mobile Semen Clinic

Join our reproduction team in collaboration with the **Caledon Kennel Association** at their **50th Anniversary Conformation Show** for a Mobile Semen Clinic

Please contact us to book your appointment!

Proof of current rabies vaccination and a booking deposit will be required.

**Semen Freeze \$600** - Includes exam, collection, evaluation, freeze, brucellosis test, 1 year of storage.

**Repeat Freeze \$350** - For dogs already collected & frozen at Graham Animal Hospital.

**Semen Evaluation \$350** - Includes exam, semen collection, evaluation, brucellosis test.

**Brucellosis Test Only \$100**

Friday November 29 & Saturday 30, 2024  
Orangeville Fairgrounds  
247090 Side Rd 5, Mono, ON

For questions  
or to book:



519-855-6439



repro@grahamanimalhospital.ca

<b>Entry Fees</b>	Entry fee .....	<b>\$36.00</b>
	Listing fee .....	<b>\$11.30</b>
	Baby Puppy ( <i>no listing fees</i> ) .....	<b>\$15.00</b>
	Exhibition only .....	<b>\$10.00</b>
	Pre-ordered catalogue .....	<b>\$10.00</b>

*Unless otherwise stated, fees are per dog, per show.*

**All fees include HST and are in Canadian Funds.** A listing fee is payable for all dogs entered at shows that do not have an individual CKC registration number or an ERN. All cheques and money orders are to be made payable to **MJN SHOW SERVICES** and mailed to:

**MJN Show Services** 33 Devonglen Drive, Kitchener, ON N2E 1Z6

## **ENTRIES CLOSE 8 P.M. (ET) WEDNESDAY, NOVEMBER 13, 2024**

*To comply with instructions issued by the Canadian Kennel Club, we will be unable to accept any entry reaching our Show Secretary after the advertised deadline date and time.*



**MJN Show Services – Send entries and e-transfers to:**  
**info@mjnshowservices.com | (519) 568-8582 | Fax: (519) 568-8484**

MJN Show Services will accept entries paid by VISA, MasterCard, American Express or e-mail transfer. There is no charge for e-transfers and the service charge for credit cards and fax entries is 5%. Declined credit cards will be deemed non-payment and entries will NOT be accepted. Entries processed by credit card and then cancelled before closing time will be charged a fee of \$3.00. **MJN Show Services will not be held responsible for any difficulties encountered with fax transmissions. Please call to confirm receipt prior to closing.**

### **USA Exhibitors**

Bank drafts or money orders in Canadian Funds and personal cheques, payable in U.S. funds, and for the full amount of the entry will be accepted. Personally discounted cheques will not be honoured. Please do not mark personal cheques "Payable in Canadian Funds" or "At Par" as such items are not cleared through the banks. Your cooperation is appreciated.

### **Catalogues**

Catalogues are available on a PRE-ORDER basis only: \$10 (including HST). Please use check box on the entry form.

**the entry line**  
td.  
ENTER DOG EVENTS  
the easy way

**ENTER ONLINE**  
Online entries taken until official closing.  
www.entryline.com

**ENTER BY PHONE**  
Phone entries taken until 6pm.  
Our friendly dog show entry experts are here to help!  
1-800-293-2935

This is a privately owned business and charges a fee for this service.

VISA   MasterCard   American Express   Discover



OFFICIAL CANADIAN KENNEL CLUB FORM

# CONFORMATION CALEDON KENNEL ASSOCIATION

All Breed:  Friday, Nov. 29, 2024  Saturday, Nov. 30, 2024  Sunday, Dec. 1, 2024

Limited:  Friday, Nov. 29, 2024  Saturday, Nov. 30, 2024  Sunday, Dec. 1, 2024  
(U.K. BREEDS) (GROUP 4 – TERRIER) (GROUP 1 – SPORTING)

**CLOSING DATE: 8 P.M. (ET)  
WEDNESDAY, NOVEMBER 13, 2024**

Make fees payable to  
**MJN SHOW SERVICES**  
and mail to:  
33 Devonglen Drive  
Kitchener, ON N2E 1Z6  
info@mjnshowservices.com

*Please type or print clearly*

Entry Fees (\$36)	\$ _____
TCN Listing Fees (\$11.30)	\$ _____
Baby Puppy (\$15/day)	\$ _____
Exhibition Only (\$10/day)	\$ _____
Pre-Ordered Catalogue (\$10)	\$ _____
TOTAL enclosed	\$ _____

Breed	Variety	Sex
-------	---------	-----

Enter in the following Classes:

- |  |  |  |
|--|--|--|
| <input type="checkbox"/> Junior Puppy  | <input type="checkbox"/> Bred by Exhibitor | <input type="checkbox"/> Baby Puppy<br><i>(all-breed shows only)</i> |
| <input type="checkbox"/> Senior Puppy  | <input type="checkbox"/> Open              | <input type="checkbox"/> Catalogue                                   |
| <input type="checkbox"/> 12-18 Month   | <input type="checkbox"/> Specials Only     | <input type="checkbox"/> <b>Owner-Handler (Sat only)</b>             |
| <input type="checkbox"/> Canadian Bred | <input type="checkbox"/> Exhibition Only   |  |

Reg. Name of Dog

Check One:

- |                                       |                                  |
|---------------------------------------|----------------------------------|
| <input type="checkbox"/> CKC Reg. No. | <input type="checkbox"/> CKC MCN |
| <input type="checkbox"/> CKC ERN      | <input type="checkbox"/> CKC TCN |

Date of Birth

D \_\_\_\_\_ M \_\_\_\_\_ Y \_\_\_\_\_

Is this a puppy?

YES \_\_\_ NO \_\_\_

Enter Number Here:

Place of Birth

- |                                 |                                    |
|---------------------------------|------------------------------------|
| <input type="checkbox"/> Canada | <input type="checkbox"/> Elsewhere |
|---------------------------------|------------------------------------|

Breeder(s)

Sire

Dam

Reg'd Owner(s)

Owner's Address

City

Prov.

Code

Name of Owner's Agent (if any)  
at the Show

Agent's Address

City

Prov.

Code

Mail I.D. to  Owner or  Agent Email \_\_\_\_\_

### FAX/CREDIT CARD ENTRIES

Am Express  Mastercard  VISA Card No. \_\_\_\_\_ Expiry \_\_\_\_\_

Name of Cardholder \_\_\_\_\_ Signature \_\_\_\_\_

I CERTIFY that I am the registered owner(s) of the dog or that I am the authorized agent of the owner(s) whose name(s) I have entered above and accept full responsibility for all statements made in this entry. In consideration of the acceptance of this entry I (we) agree to be bound by the rules and regulations of the Canadian Kennel Club and by any additional rules and regulations appearing in the premium list. Also by signing this form, I certify that I will not hold the Show giving Club, its members, directors, employees or agents liable in the event of any accident of misfortune however caused.

SIGNATURE OF OWNER OR AGENT

TELEPHONE NO.

---

## Entry Information

1. No entry will be accepted unless all particulars called for on the entry form are completed in full. Handlers or agents please note the full name and address of all owners must be filled in.
2. Incomplete entries will be returned. No entry will be accepted unless accompanied by entry fees. Telephone entries cannot be accepted. Exhibitors must abide by errors made in entering their dogs regardless of how or by whom the entries were made.
3. There is no refund for duplicate cheques. Every effort will be made to find all duplicate entries, however if the entry has been processed and appears in the official catalogue, no refund will be made.
4. Alterations, substitutions or cancellations of any entry after the closing date is prohibited. Moving Class Dogs to Specials or unfinished Specials back to the classes is permitted. An error in the class, date of birth or sex may be amended on the entry form up to one hour before the start of the show. Only dogs already registered in the Canadian Kennel Club Stud Book, or eligible for such registration, can be entered. The committee reserves the right to refuse any entry subject to CKC Rules. **Entries close 8 P.M. (ET) Wednesday, November 13, 2024, and must be in the hands of the Show Secretary by that date.**
5. Identification cards and judging schedules will be e-mailed as soon as possible after the entries close.
6. Tendering of NSF cheques in payment of fees shall be considered non-payment of fees and is punishable by disciplinary action. **Any NSF cheques will be subject to a \$35 service charge.**

---

## General Information

1. The Show Superintendent will be in full charge of the show, which will be governed by CKC Rules.
2. The Caledon Kennel Association will use due care and diligence for the welfare of dogs and exhibitors, but will not be responsible for, or assume liability in the event of accident, or other misfortunes, to either dogs, exhibitors or patrons.
3. If, because of riot, civil disturbance or other acts beyond the control of management, it is impossible to open or to complete the show, no refund of entry will be made.
4. Dogs should arrive in adequate time for their breed judging (allowing for absentees) and will be excused each show when not required for further judging. It is the responsibility of the exhibitors to have the dog at ringside when the dog's class is scheduled for judging. Waiting for dogs will not be possible and handlers with several breeds must arrange for alternate handlers if judging times for their breeds conflict.
5. Judging will commence at 8 a.m. each day. A later starting time may be specified in the judging schedule. Starting time of each ring will be specified in judging schedule.
6. The building will be locked at 9 p.m. and re-opened for 6 a.m. Dogs can be left in the building overnight.
7. SHOW PRECINCTS – The show precincts shall consist of all areas inside the building (rings, grooming area, judges' room, bathrooms, etc.).
8. GROOMING AREA – Space will be at a premium in the grooming area. One ex-pen area will be provided inside. **No ex-pens during show hours.** Please stack crates and keep chairs and equipment to a minimum.

---

**Refund Policy** If, because of riot, civil disturbance or other acts beyond the control of management, it is impossible to open or to complete the show, no refund of Entry will be made.

---

**Temporary Competition Number (TCN)** A Temporary Competition Number (TCN) allows dogs to temporarily participate in CKC events while they pursue permanent registration or an Event Registration Number (ERN).

A TCN must be obtained before submitting an entry for an event.

The same TCN must be used for all event entries for a dog until the dog is permanently registered or has an ERN.

TCNs can be obtained through your CKC member portal or by contacting the CKC.

**Note: There is no CKC fee to obtain a TCN. However, a TCN 'listing' fee is required each time a dog with only a TCN is entered in an event.**

---

**Event Registration Number (ERN)** All dogs that are foreign born and foreign owned and enter Canada for the sole purpose of entering CKC events, and do not have a CKC registration number, will require an Event Registration Number (ERN).

The ERN number MUST be applied for within 30 days of the first day of entering a CKC event.

Fee is \$64.00 per dog, plus applicable taxes.

---

**Non-Member Participation Fee** Effective January 1, 2011:

- a) A non-member participation fee will be charged to a resident of Canada who is a non-member of the CKC. The fee will be \$170.00 plus applicable taxes.
- b) The non-member participation fee is paid in any year a title is earned and covers all titles and dogs owned by that individual.
- c) In order for the title to be awarded, the non-member will have a choice to either become a CKC member or pay the non-member participation fee. Failure to comply within 30 days of notification will result in the title being withheld and the dog cannot be moved up to the next level.
- d) The fee applies only to dogs wholly owned by non-member residents of Canada and is not applicable to CKC members.

---

**CKC Membership** **\$54.00**, plus applicable taxes. For a list of membership benefits and an application to join, visit [ckc.ca](http://ckc.ca).



---

## CH and Champion Points

**Section 15.1.1** A dog awarded Winners at a conformation show shall be credited with a number of championship points (ranging from 0 to 5) and the number of championship points credited to a dog awarded Winners shall be as provided hereunder.

**Section 15.1.2** The schedule to be employed in the determination of the number of points to be allocated a dog awarded WINNERS shall be as follows:

Dogs competing*	1	2	3 to 5	6 to 9	10 to 12	13 or more
Points allocated	0	1	2	3	4	5

*\*includes the dog awarded Winners*

In counting the number of eligible dogs in competition, a dog that is disqualified, dismissed, excused or ordered from the ring by the judge SHALL NOT be included in the calculation for championship points.

To determine the number of championship points earned by a dog awarded Winners, total all the dogs in competition which the dog defeated, directly or indirectly, for the highest of the following official breed awards: Winners, Best of Winners, Best of Breed, or Best of Opposite Sex and then consult the schedule set forth above.

**Section 15.1.8** In addition to championship points allocated at the breed level, a dog awarded Best of Breed that also places in the regular group competition shall be credited with the following additional points, provided that a dog was defeated at the group level.

Number of Breeds

Competing at Group Level	Dog Placed First	Dog Placed Second	Dog Placed Third	Dog Placed Fourth
13 or more	5	4	3	2
10 to 12	4	3	2	1
6 to 9	3	2	1	1
5	2	1	1	1
4	2	1	1	0
3	2	1	0	0
2	1	0	0	0
1	0	0	0	0

**Section 15.1.11** A class dog awarded Best in Show at an all-breed Championship show will be credited with five points inclusive of any points earned at the breed or group level.

**Section 15.1.12** In order for a dog to be recognized as a Champion and its owner provided with a Championship Certificate, the dog must have earned 10 championship points under at least three (3) different judges, with at least one 2-point win either at the breed or group level.

---

## GCH and Grand Champion Points

**Section 15.2.1** The title of Grand Champion may only be earned after the completion of the CKC conformation championship.

**15.2.2** Points for this title are only accumulated after the completion of the conformation championship and do not include the points earned in attaining the conformation championship.

**Section 15.2.3** To be awarded a Grand Champion title, a dog must attain a minimum of 20 points, which must include a minimum of two (2) wins of at least two (2) points each. Points may be gained at breed, group or Best in Show/Specialty level. Only the highest points earned at a single show are carried forward.

- a) Grand Champion Point System Points towards the Grand Champion title, are attained at breed level and are awarded to Best of Breed, Best of Opposite Sex, Select Dog and Select Bitch. Points are calculated based on the number of animals competing at the breed level for the Best of Breed winner and the number of similar-sex dogs competing for the other three (Best of Opposite, Select Dog, Select Bitch). The following schedule shall be employed in the determination of points awarded at breed level for all levels of GCh:

Dogs competing*	1	2	3 to 5	6 to 9	10 to 12	13 or more
Points allocated	0	1	2	3	4	5

- b) The following schedule shall be employed in the determination of points awarded at group level for all levels of GCh:

Number of Breeds

Competing at Group Level	Dog Placed First	Dog Placed Second	Dog Placed Third	Dog Placed Fourth
13 or more	5	4	3	2
10 to 12	4	3	2	1
6 to 9	3	2	1	1
5	2	1	1	1
4	2	1	1	0
3	2	1	0	0
2	1	0	0	0
1	0	0	0	0

Win	Points
Best in Show	5
Best of Breed at a National Specialty Show	5
Reserve Best in Show	4
Best of Breed at a Specialty Show ( <i>other than National</i> )	3

- c) In order to obtain a Grand Champion title, a dog must obtain at least two (2) points after 12 months of age. In counting the number of eligible dogs in competition, a dog that is disqualified, dismissed, excused or ordered from the ring by the judge shall not be included in the calculation for Grand Champion points.
- d) Only the highest points earned at a single show are carried forward.

#### **Section 15.2.4 Grand Champion Bronze (GChB)**

The title of Grand Champion Bronze may only be earned after the completion of the CKC conformation title Grand Champion is attained.

- a) Points for this title are only accumulated after the completion of the Grand Championship, and do not include the points earned in attaining the Grand Championship.
- b) To be awarded a Grand Champion Bronze title, a dog must attain a minimum of 50 points, which must include a minimum of two wins of at least two (2) points each. Points must be gained at breed, group or Best In Show/Specialty level. Only the highest points earned at a single show are carried forward.
- c) Points accumulated prior to July 1, 2021 may be used to attain the GChB title, however, a minimum of five (5) points must be earned after July 1, 2021.

### **Section 15.2.5 Grand Champion Silver (GChS)**

The title of Grand Champion Silver may only be earned after the completion of the CKC Grand Champion Bronze is attained.

- a) Points for this title are only accumulated after the completion of the Grand Champion Bronze is attained, and do not include the points earned in attaining the Grand Championship Bronze.
- b) To be awarded a Grand Champion Silver title, a dog must attain a minimum of 100 points, which must include a minimum of two wins of at least two (2) points each. Points must be gained at breed, group or Best In Show/ Specialty level. Only the highest points earned at a single show are carried forward.

### **Section 15.2.6 Grand Champion Gold (GChG)**

The title of Grand Champion Gold may only be earned after the completion of the CKC conformation title Grand Champion Silver is attained.

- a) Points for this title are only accumulated after the completion of the Grand Champion Silver is attained, and do not include the points earned in attaining the Grand Championship Silver.
- b) To be awarded a Grand Champion Gold title, a dog must attain a minimum of 200 points, which must include a minimum of two wins of at least two (2) points each. Points must be gained at breed, group or Best In Show/ Specialty level. Only the highest points earned at a single show are carried forward.

---

### **GCHEx and Grand Champion Excellent Points**

The title of Grand Champion Excellent may be granted only after the completion of the CKC Grand Championship Silver Title. Exhibitors will be required to submit to Shows & Trials the Grand Champion Excellent Record Sheet documenting the additional requirements. The Grand Champion Excellent Record Sheet Form is located on the CKC website.

**Section 15.3.2** To earn the title a dog must have earned the following during their career as a Special:

- a) one (1) Best in Show or a Best of Breed at a breed national specialty (where a minimum of 10 dogs have competed).
- b) three (3) Group 1st, or three (3) breed specialty Best of Breed wins.
- c) a CKC performance title from any CKC Event. Titles excluded are: CGN, Herding Novice Tested Certificate, all Instinct titles from all events, as well as all Sprinter titles and all Chase Ability Program titles.

**Section 15.3.3** Best in Show, Best of Breed at a National Specialty, 3 Group wins, or 3 Specialty Best of Breed wins, must be attained after the completion of a regular championship. The performance title may be attained at any time in the dog's career.

---

## Conformation Show Rules and Regulations

The Exhibitor is responsible for knowing and complying with the Conformation Show Rules and Regulations of the Canadian Kennel Club. **Section 4.7.1** of the Conformation Show Rules and Regulations states: A judge officiating at a show held under these rules shall not be subjected to indignities of any kind during the progress of the show. It shall be the duty and obligation of the club holding the show to see that this rule is effectively carried out.

---

## Moving Class Dog to Specials Only

**Section 8.9** of the Conformation Show Rules and Regulations has been amended to allow a dog which is individually registered in the records of the Canadian Kennel Club, and has completed the requirements for a Championship, after the Closing Date for entries for a show, may be transferred from one of the Regular Classes to "Specials Only," providing the request for a transfer is submitted to the Show Secretary in WRITING at least one hour prior to the judging of your breed by the owner or handler. ***A dog that has a Temporary Competition Number (TCN) is not eligible to be transferred from one (1) of the regular classes to Specials Only.***

When one or more all-breed and/or specialty shows are held on the same day, in the same venue, the request for moving of class dogs to Specials Only must be made a minimum of one (1) hour prior to the breed judging scheduled start of the show for which the dog is being moved up to Specials Only.

---

## Moving from Specials Back to the Classes

**Section 8.10.5** A dog can be moved back into the classes from a Special if it has been entered incorrectly, only where the shows have already closed.

---

### HEALTH REMINDERS



No dog may be brought onto the grounds or premises of an event if it:

1. Is known to have distemper, parvovirus, kennel cough or other communicable disease;
2. Has recovered from distemper, parvovirus, kennel cough or other communicable disease within the last 30 days (prior to the event);
3. Has been housed within 30 days prior to the event on premises on which there existed distemper, parvovirus, kennel cough or other communicable disease.

***Clubs do have the right to remove a dog from the event premises and the exhibitor may be subject to disciplinary action if it is found that CKC rules have been contravened.***

# SHOW ETIQUETTE

*Exhibitors, handlers, judges and assistants are expected to participate with honesty, fairness and integrity, ever mindful of the practice of "good sportsmanship," before, during and after this show.*

- Any person engaging in an activity that might be considered malicious, threatening or constitutes bullying, including but not limited to social media, will be asked to leave this show without compensation and will be banned from any future shows held by this club.
- Any exhibitor who allows his/her dog to defecate or urinate inside or outside the building other than in the designated Exercise Area without immediately cleaning up or arranging for a cleanup may not be permitted to exhibit at future shows or trials held by this club. ***Please co-operate in keeping the show site clean.***
- **PLEASE ABIDE BY THE NO SMOKING/VAPING RULES OF THE COMPLEX.** Absolutely no smoking or vaping inside the building or within 30 feet of an entrance/exit. Violators will be asked to leave this show without compensation and will be banned from any future shows held by this club.

## STATEMENT ON BULLYING

### ZERO TOLERANCE

Any individual initiating bullying tactics at the Caledon Kennel Association shows will be asked to leave the show grounds premises immediately and for the remainder of the event (no refunds). A report will be filed with the CKC and the Discipline Committee shall have the authority to take such action as it deems fit.

### DEFINITION OF BULLYING

Refers to a range of behaviours in which targeted individuals are repeatedly, and over time, treated in a mean, insulting or abusive way. Bullying can be initiated deliberately or unconsciously. The affected person may feel upset, afraid, isolated, or humiliated. The bully sometimes acts alone and sometimes as part of a group.

#### **Examples include:**

- insulting a person's skills, looks, or habits
- spreading false or malicious rumors, gossip, or innuendo
- berating/belittling an Individual
- unwarranted criticizing or ridiculing, especially in the presence of others
- giving insulting nicknames
- engaging in practical jokes that humiliate
- undermining or deliberately impeding a person's work
- physical gesturing that intimidates, offends, degrades, or humiliates
- mocking a person's accent, abilities or mannerisms
- yelling or shouting which intimidates, coerces, or belittles

**Hydro**

Grooming space is free.

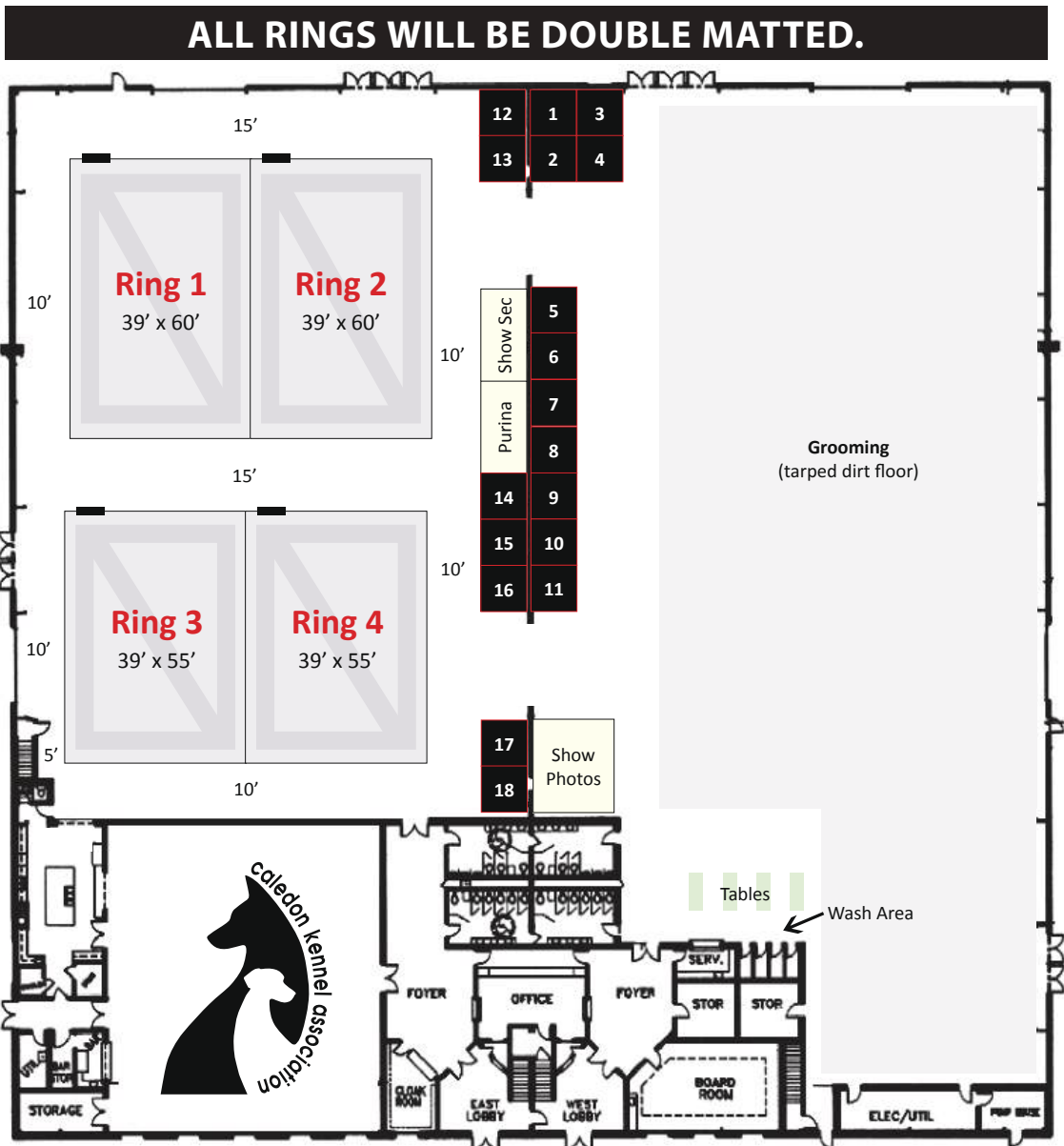
Hydro can be pre-booked/pre-paid by **Thursday, November 28th. \$40 for the weekend.**

Send e-transfers to [k94milton@gmail.com](mailto:k94milton@gmail.com). **PLEASE PUT "HYDRO" IN THE COMMENTS, ALONG WITH YOUR FULL NAME AND EMAIL ADDRESS.** (If you are prompted to give a password, please use the word "hydro," all lowercase.)

*A limited number of hydro drops may be available after Thursday, November 28th for \$60. Bookings can be made at the Caledon Kennel Association booth. (Problems with hydro hookups must be brought to our attention during the show. No refunds after the show.)*

The grooming area will be open each day of the show at 6 a.m., closing at 9 p.m. Dogs remaining overnight must have the contact sheet information form attached to their crates. Forms will be available at the show secretary's desk.

Setup will be available starting at 1 p.m. on Thursday, November 28.



## Motels

The following motels that allow dogs state that owner/handlers will be held responsible for any and all damage. Dogs must **not** be groomed or bathed in the motel rooms. Owners **must** clean up after exercising their dogs on motel property.

### **NEW! Dog-friendly hotel in Mono!! 2 minutes from show site! HAMPTON INN & SUITES**

201 Monora Park Dr., Mono, ON L9W 0E1 | (519) 938-8881  
Exhibitors allowed up to 2 dogs (max 75 lb each). Breakfast included.

#### **Dogs will be accepted at the following motels, but must be crated:**

##### **HAMPTON INN BOLTON**

(40 km to show site)  
12700 Hwy 50  
Bolton, ON L7E 1L9  
(905) 857-9990

##### **MOTEL 6 BRAMPTON**

(45 km to show site)  
160 Steelwell Rd  
Brampton, ON L6T 5T3  
(905) 451-3313

#### **Dogs will NOT be accepted at the following motels:**

##### **Orangeville Motel**

633195 ON-10, Mono, ON  
(519) 941-6831

##### **Howard Johnson Orangeville**

236 First St, Orangeville, ON  
(519) 307-2600

##### **Atlanta Motel**

316 Broadway, Orangeville, ON  
(519) 941-9880

##### **Shelburne Motel**

506243 ON-89, Orangeville, ON  
(519) 925-5552

## Show Site & Parking

### **ORANGEVILLE FAIRGROUNDS**

247090 Side Road 5, Mono, ON L9W 6K5

The south side of the building is a tow-away zone. Exhibitors who park there risk having their vehicle towed. Parking for vehicles is on the east side of the building.

#### **RV PARKING**

15 amp service only. No water hookup due to time of year.  
For rates and reservations, contact: Jenn Arron, OAS Events Manager  
(519) 942-9597 or email: [manager@oaseventcentre.ca](mailto:manager@oaseventcentre.ca)

