

JUDGING SCHEDULE



SATURDAY, MARCH 21, 2020
SUNDAY, MARCH 22, 2020

WFCU Centre
8787 McHugh Street
Windsor, Ontario N8S 0A1

SHOW SECRETARY
MJN SHOW SERVICES
9 Samya Court
Scarborough ON M1R 2A4
Tel. (416) 759-8593 Fax (416) 759-7790
www.mjnshowservices.com

IMPORTANT NOTICE

NO DOGS WILL BE ALLOWED TO STAY IN THE BUILDING OVERNIGHT.
NO OUTSIDE FOOD OR DRINK WILL BE ALLOWED IN THE BUILDING.

There is a Tim Horton's on-site.

The building will be open for the convenience of exhibitors between 4:00 p.m. and 10:00 p.m. on Friday, March 20, 2020. The building will open at 6:00 a.m. on Saturday and Sunday and close at 10 p.m. Saturday evening.

NO PRIVATE EXERCISE PENS

SATURDAY, MARCH 21, 2020

SHOW #1

RING 1 - JUDGE: Ms. V. Mercer

8:00 a.m.	1	Lagotto Romagnolo	0-1-0-0
	1	Pointer	0-0-0-1
	6	Pointer (GSH)	1-0-2-3
	1	Ret (Chesapeake Bay)	0-0-1-0
	2	Ret (Flat-Coated)	0-2-0-0
	6	Ret (Golden)	0-4-1-1
	8	Ret (NSDT)	2-4-1-1
	1	Setter (Irish)	1-0-0-0
	1	Span (Eng Springer)	1-0-0-0
	7	Ret (Labrador)	2-3-2-0
	1	Vizsla	0-1-0-0
	2	Weimaraner	0-2-0-0
	3	Span (Am Cocker)	0-0-2-1

**Group Judging Upon
Completion of Breeds**

RING 1 - JUDGE: Mr. J. Frederiksen

10:10 a.m.	2	Basenji	0-0-2-0
	2	Beagle	0-2-0-0
	3	Dachshund (MLH)	0-2-0-1
	3	Dachshund (MS)	0-1-0-2
	2	Dachshund (MWH)	0-1-1-0
	2	Whippet	1-0-0-1
	1	Afghan Hound	0-1-0-0
	2	Borzoi	0-0-2-0
	6	Coonhound (B&T)	1-4-0-1
	1	Finnish Spitz	0-1-0-0
	3	Irish Wolfhound	0-0-0-3
	1	Otterhound	0-0-1-0
	1	Rhodesian	1-0-0-0

**Group Judging Upon
Completion of Breeds**

RING 2 - JUDGE: Ms. E. Muthard

8:00 a.m.	2	Aust Cattle Dog	1-0-1-0
	6	Australian Shepherd	2-2-2-0
	1	Bearded Collie	0-0-0-1
	2	Belgian Shepherd	1-0-0-1
	3	Bouvier	3-0-0-0
	1	Old Eng Sheepdog	1-0-0-0
	1	Min American Shep	0-0-0-1
	1	Puli	0-0-1-0
	4	Shetland Sheepdog	0-2-1-1

**Group Judging Upon
Completion of Breeds**

9:10 a.m.	8	Bulldog	3-3-1-1
	2	Chinese Shar-Pei	0-1-1-0
	1	French Bulldog	0-0-1-0
	1	Lhasa Apso	0-0-1-0

2	Lowchen	1-1-0-0
1	Poodle (Miniature)	0-0-1-0
1	Schipperke	0-0-1-0
3	German Pinscher	0-2-0-1
3	Keeshond	2-0-1-0
5	Poodle (Standard)	0-1-3-1

**Group Judging Upon
Completion of Breeds**

RING 2 - JUDGE: Mrs. M. Scott

10:40 a.m.	1	Akita	1-0-0-0
	1	Bernese Mtn Dog	1-0-0-0
	3	Black Russian	1-2-0-0
	5	Boxer	2-1-1-1
	4	Doberman Pinscher	0-1-2-1
	1	Great Dane	0-0-0-1
	3	Leonberger	1-2-0-0
	3	Newfoundland	2-0-1-0
	3	Portuguese Wtr Dog	0-0-2-1
	1	Rottweiler	1-0-0-0
	1	Saint Bernard	0-0-0-1
	1	Siberian Husky	0-1-0-0

**Group Judging Upon
Completion of Breeds**

RING 3 - JUDGE: Mr. C. Olvis

8:00 a.m.	2	Cairn Terrier	0-2-0-0
	2	Dandie Dinmont	0-0-2-0
	2	Fox Terrier (W)	0-1-1-0
	1	Glen of Imaal	1-0-0-0
	1	Lakeland Terrier	0-0-1-0
	2	Norwich Terrier	2-0-0-0
	1	Airedale Terrier	1-0-0-0
	5	S.C.W.T.	1-1-2-1

**Group Judging Upon
Completion of Breeds**

9:00 a.m.	9	C.K.C. Spaniel	1-4-4-0
	1	Chihuahua (LC)	1-0-0-0
	2	Chihuahua (SC)	0-0-0-2
	4	Chinese Crested	1-2-1-0
	2	Griffon (Brussels)	0-2-0-0
	7	Havanese	1-5-0-1
	1	Italian Greyhound	0-1-0-0
	1	Miniature Pinscher	1-0-0-0
	4	Papillon	1-2-1-0
	1	Poodle (Toy)	0-1-0-0
	7	Pug	0-2-4-1
	1	Yorkshire Terrier	0-0-1-0

**Group Judging Upon
Completion of Breeds**

SATURDAY, MARCH 21, 2020

SHOW #2

RING 1 - JUDGE: Mr. J. Frederiksen

12:15 p.m.	2	Cairn Terrier	0-2-0-0
	2	Dandie Dinmont	0-0-2-0
	2	Fox Terrier (W)	0-1-1-0
	1	Glen of Imaal	1-0-0-0
	1	Lakeland Terrier	0-0-1-0
	2	Norwich Terrier	2-0-0-0
	1	Airedale Terrier	1-0-0-0
	5	S.C.W.T.	1-1-2-1

**Group Judging Upon
Completion of Breeds**

1:15 p.m.	7	C.K.C. Spaniel	1-2-4-0
	1	Chihuahua (LC)	1-0-0-0
	2	Chihuahua (SC)	0-0-0-2
	4	Chinese Crested	1-2-1-0
	2	Griffon (Brussels)	0-2-0-0
	7	Havanese	1-5-0-1
	2	Italian Greyhound	0-2-0-0
	1	Miniature Pinscher	1-0-0-0
	4	Papillon	1-2-1-0
	1	Poodle (Toy)	0-1-0-0
	7	Pug	0-2-4-1
	1	Yorkshire Terrier	0-0-1-0

**Group Judging Upon
Completion of Breeds**

RING 2 - JUDGE: Mrs. M. Scott

12:15 p.m.	2	Aust Cattle Dog	1-0-1-0
	6	Australian Shepherd	2-2-2-0
	1	Bearded Collie	0-0-0-1
	2	Belgian Shepherd	1-0-0-1
	3	Bouvier	3-0-0-0
	1	Old Eng Sheepdog	1-0-0-0
	1	Min American Shep	0-0-0-1
	1	Puli	0-0-1-0
	4	Shetland Sheepdog	0-2-1-1

**Group Judging Upon
Completion of Breeds**

RING 2 - JUDGE: Mr. P. Scott

1:30 p.m.	8	Bulldog	3-3-1-1
	1	Chinese Shar-Pei	0-0-1-0
	1	French Bulldog	0-0-1-0
	1	Lhasa Apso	0-0-1-0
	2	Lowchen	1-1-0-0
	1	Poodle (Miniature)	0-0-1-0
	1	Schipperke	0-0-1-0
	3	German Pinscher	0-2-0-1
	4	Keeshond	3-0-1-0

5	Poodle (Standard)	0-1-3-1
---	-------------------	---------

**Group Judging Upon
Completion of Breeds**

RING 2 - JUDGE: Ms. E. Muthard

3:00 p.m.	1	Akita	1-0-0-0
	1	Bernese Mtn Dog	1-0-0-0
	3	Black Russian	1-2-0-0
	5	Boxer	2-1-1-1
	4	Doberman Pinscher	0-1-2-1
	1	Great Dane	0-0-0-1
	3	Leonberger	1-2-0-0
	3	Newfoundland	2-0-1-0
	3	Portuguese Wtr Dog	0-0-2-1
	1	Rottweiler	1-0-0-0
	1	Saint Bernard	0-0-0-1
	1	Siberian Husky	0-1-0-0

**Group Judging Upon
Completion of Breeds**

RING 3 - JUDGE: Mr. C. Olvis

12:15 p.m.	1	Lagotto Romagnolo	0-1-0-0
	1	Pointer	0-0-0-1
	6	Pointer (GSH)	1-0-2-3
	1	Ret (Chesapeake Bay)	0-0-1-0
	2	Ret (Flat-Coated)	0-2-0-0
	6	Ret (Golden)	0-4-1-1
	8	Ret (NSDT)	2-4-1-1
	1	Setter (Irish)	1-0-0-0
	1	Span (Eng Springer)	1-0-0-0
	7	Ret (Labrador)	2-3-2-0
	1	Vizsla	0-1-0-0
	2	Weimaraner	0-0-1-1
	3	Span (Am Cocker)	0-0-2-1

**Group Judging Upon
Completion of Breeds**

2:25 p.m.	2	Basenji	0-0-2-0
	2	Beagle	0-2-0-0
	3	Dachshund (MLH)	0-2-0-1
	3	Dachshund (MS)	0-1-0-2
	3	Dachshund (MWH)	1-1-1-0
	2	Whippet	1-0-0-1
	1	Afghan Hound	0-1-0-0
	2	Borzoi	0-0-2-0
	6	Coonhound (B&T)	1-4-0-1
	1	Finnish Spitz	0-1-0-0
	3	Irish Wolfhound	0-0-0-3
	1	Otterhound	0-0-1-0
	1	Rhodesian	1-0-0-0

**Group Judging Upon
Completion of Breeds**

SUNDAY, MARCH 22, 2020

SHOW #3

RING 1 - JUDGE: Ms. E. Muthard

8:00 a.m.	7	C.K.C. Spaniel	1-3-3-0
	1	Chihuahua (LC)	1-0-0-0
	2	Chihuahua (SC)	0-0-0-2
	4	Chinese Crested	1-2-1-0
	9	Havanese	3-5-0-1
	4	Italian Greyhound	0-2-1-1
	1	Japanese Chin	0-0-1-0
	1	Miniature Pinscher	1-0-0-0
	2	Papillon	0-1-1-0
	1	Poodle (Toy)	0-1-0-0
	7	Pug	0-2-4-1
	1	Yorkshire Terrier	0-0-1-0

**Group Judging Upon
Completion of Breeds**

10:10 a.m.	2	Cairn Terrier	0-2-0-0
	1	Dandie Dinmont	0-0-1-0
	2	Fox Terrier (W)	0-1-1-0
	1	Glen of Imaal	1-0-0-0
	1	Lakeland Terrier	0-0-1-0
	2	Norwich Terrier	2-0-0-0
	1	Russell Terrier	0-0-1-0
	1	Airedale Terrier	1-0-0-0
	5	S.C.W.T.	1-1-2-1

**Group Judging Upon
Completion of Breeds**

RING 2 - JUDGE: Mrs. M. Scott

8:00 a.m.	2	Basenji	0-0-2-0
	2	Beagle	0-2-0-0
	3	Dachshund (MLH)	0-2-0-1
	3	Dachshund (MS)	0-1-0-2
	2	Dachshund (MWH)	0-1-1-0
	1	Afghan Hound	0-1-0-0
	2	Borzoi	0-0-2-0
	6	Coonhound (B&T)	1-4-0-1
	1	Finnish Spitz	0-1-0-0
	2	Irish Wolfhound	0-0-0-2
	1	Norwegian Elkhound	0-1-0-0
	1	Otterhound	0-0-1-0
	1	Rhodesian	1-0-0-0

**Group Judging Upon
Completion of Breeds**

9:35 a.m.	1	Lagotto Romagnolo	0-1-0-0
	6	Pointer (GSH)	1-0-2-3
	1	Ret (Chesapeake Bay)	0-0-1-0
	2	Ret (Flat-Coated)	0-2-0-0
	7	Ret (Labrador)	2-3-2-0
	6	Ret (NSDT)	2-3-1-0

3	Setter (Irish)	2-1-0-0
2	Span (Eng Springer)	2-0-0-0
5	Ret (Golden)	1-4-0-0
1	Vizsla	0-1-0-0
2	Weimaraner	0-2-0-0
3	Span (Am Cocker)	0-0-2-1

**Group Judging Upon
Completion of Breeds**

RING 3 - JUDGE: Mr. C. Olvis

8:30 a.m.	8	Bulldog	3-3-1-1
	1	Chinese Shar-Pei	0-0-0-1
	1	French Bulldog	0-0-1-0
	2	Lowchen	1-1-0-0
	1	Poodle (Miniature)	0-0-1-0
	1	Schipperke	0-0-1-0
	3	German Pinscher	0-2-0-1
	3	Keeshond	2-0-1-0
	5	Poodle (Standard)	0-1-3-1

**Group Judging Upon
Completion of Breeds**

9:50 a.m.	2	Aust Cattle Dog	1-0-1-0
	5	Australian Shepherd	2-1-2-0
	1	Bearded Collie	0-0-0-1
	2	Belgian Shepherd	1-0-0-1
	3	Bouvier	3-0-0-0
	1	Collie (Rough)	0-1-0-0
	1	Old Eng Sheepdog	1-0-0-0
	1	Min American Shep	0-0-0-1
	1	Puli	0-0-1-0
	5	Shetland Sheepdog	0-3-1-1

**Group Judging Upon
Completion of Breeds**

RING 3 - JUDGE: Mr. J. Frederiksen

11:00 a.m.	1	Akita	1-0-0-0
	1	Bernese Mtn Dog	1-0-0-0
	3	Black Russian	1-2-0-0
	7	Boxer	1-4-1-1
	1	Bullmastiff	0-0-1-0
	4	Doberman Pinscher	0-1-1-2
	1	Great Dane	0-0-0-1
	4	Leonberger	2-2-0-0
	3	Newfoundland	2-0-1-0
	2	Portuguese Wtr Dog	0-0-2-0
	1	Rottweiler	1-0-0-0
	1	Saint Bernard	0-0-0-1
	2	Siberian Husky	0-2-0-0

**Group Judging Upon
Completion of Breeds**

SUNDAY, MARCH 22, 2020

SHOW #4

RING 1 - JUDGE: Ms. E. Muthard

12:15 p.m.	2	Basenji	0-0-2-0
	2	Beagle	0-2-0-0
	3	Dachshund (MLH)	0-2-0-1
	3	Dachshund (MS)	0-1-0-2
	3	Dachshund (MWH)	1-1-1-0
	1	Whippet	0-0-0-1
	1	Afghan Hound	0-1-0-0
	2	Borzoi	0-0-2-0
	6	Coonhound (B&T)	1-4-0-1
	1	Finnish Spitz	0-1-0-0
	3	Irish Wolfhound	0-0-0-3
	1	Otterhound	0-0-1-0
	1	Rhodesian	1-0-0-0

**Group Judging Upon
Completion of Breeds**

1:50 p.m.	1	Lagotto Romagnolo	0-1-0-0
	6	Pointer (GSH)	1-0-2-3
	1	Ret (Chesapeake Bay)	0-0-1-0
	2	Ret (Flat-Coated)	0-2-0-0
	7	Ret (Labrador)	2-3-2-0
	4	Ret (NSDT)	1-2-1-0
	3	Setter (Irish)	2-1-0-0
	2	Span (Eng Springer)	2-0-0-0
	6	Ret (Golden)	0-4-1-1
	1	Vizsla	0-1-0-0
	2	Weimaraner	0-0-1-1
	3	Span (Am Cocker)	0-0-2-1

**Group Judging Upon
Completion of Breeds**

RING 2 - JUDGE: Mrs. M. Scott

12:15 p.m.	7	C.K.C. Spaniel	1-4-2-0
	1	Chihuahua (LC)	1-0-0-0
	2	Chihuahua (SC)	0-0-0-2
	4	Chinese Crested	1-2-1-0
	8	Havanese	3-4-0-1
	5	Italian Greyhound	0-3-1-1
	1	Japanese Chin	0-0-1-0
	1	Miniature Pinscher	1-0-0-0
	2	Papillon	0-1-1-0
	7	Pug	0-2-4-1
	1	Yorkshire Terrier	0-0-1-0

**Group Judging Upon
Completion of Breeds**

2:10 p.m.	1	Dandie Dinmont	0-0-1-0
	2	Fox Terrier (W)	0-1-1-0
	1	Glen of Imaal	1-0-0-0
	1	Lakeland Terrier	0-0-1-0

2	Manchester Terrier	0-1-1-0
2	Norwich Terrier	2-0-0-0
1	Airedale Terrier	1-0-0-0
6	S.C.W.T.	1-2-2-1

**Group Judging Upon
Completion of Breeds**

RING 2 - JUDGE: Mr. J. Frederiksen

3:05 p.m.	2	Aust Cattle Dog	1-0-1-0
	5	Australian Shepherd	2-1-2-0
	1	Bearded Collie	0-0-0-1
	2	Belgian Shepherd	1-0-0-1
	3	Bouvier	3-0-0-0
	1	Collie (Rough)	0-1-0-0
	1	Min American Shep	0-0-0-1
	1	Puli	0-0-1-0
	5	Shetland Sheepdog	0-3-1-1

**Group Judging Upon
Completion of Breeds**

RING 3 - JUDGE: Mr. J. Frederiksen

12:45 p.m.	8	Bulldog	3-3-1-1
	1	Chinese Shar-Pei	0-0-0-1
	1	French Bulldog	0-0-1-0
	2	Lowchen	1-1-0-0
	1	Poodle (Miniature)	0-0-1-0
	1	Schipperke	0-0-1-0
	3	German Pinscher	0-2-0-1
	4	Keeshond	3-0-1-0
	5	Poodle (Standard)	0-1-3-1

**Group Judging Upon
Completion of Breeds**

RING 3 - JUDGE: Mr. C. Olvis

2:15 p.m.	1	Akita	1-0-0-0
	1	Bernese Mtn Dog	1-0-0-0
	3	Black Russian	1-2-0-0
	7	Boxer	1-4-1-1
	1	Bullmastiff	0-0-1-0
	4	Doberman Pinscher	0-1-1-2
	1	Great Dane	0-0-0-1
	4	Leonberger	2-2-0-0
	3	Newfoundland	2-0-1-0
	2	Portuguese Wtr Dog	0-0-2-0
	1	Rottweiler	1-0-0-0
	1	Saint Bernard	0-0-0-1
	2	Siberian Husky	0-2-0-0

**Group Judging Upon
Completion of Breeds**

JUNIOR HANDLING

SATURDAY, MARCH 21, 2020

Ring 3 - 11:15 a.m.

SUNDAY, MARCH 22, 2020

Ring 1 - 11:15 a.m.

Juniors must sign up one hour before the start of judging.

GENERAL SPECIALS

Saturday, March 21, 2020 - Show #1 - Mr. C. Olvis

Saturday, March 21, 2020 - Show #2 - Mrs. M. Scott

Sunday, March 22, 2020 - Show #3 - Mr. J. Frederiksen

Sunday, March 22, 2020 - Show #4 - Ms. E. Muthard

PLEASE NOTE - Best in Show for both shows each day will take place upon completion of all Group judging.

SANCTION MATCH

Saturday, March 21, 2020

The match will be held 30 minutes after the two Best in Show competitions.

SUMMARY

	<u>Sat. #1</u>	<u>Sat. #2</u>	<u>Sun. #3</u>	<u>Sun. #4</u>
Group 1	40	40	39	38
Group 2	29	30	27	29
Group 3	27	27	31	31
Group 4	16	16	16	16
Group 5	40	39	40	39
Group 6	27	27	25	26
Group 7	<u>21</u>	<u>21</u>	<u>22</u>	<u>21</u>
	200	200	200	200
Obedience	14	16	16	14
Rally	<u>23</u>	<u>20</u>	<u>21</u>	<u>14</u>
	237	236	237	228

OBEDIENCE AND RALLY TRIALS

Obedience judging is based on the formula of 9 Pre-Novice, 8 Novice, 7 Open and 6 Utility dogs per hour. All lunches and breaks will be at the judge's discretion. Exhibitors with conflicts between Obedience and Conformation should notify the Obedience Ring Stewards.

Rally judging is based on the formula of 15 dogs per hour. All lunches and breaks will be at the judge's discretion. Exhibitors with conflicts between Rally and Conformation should notify the Rally Ring Stewards.

OBEDIENCE TRIALS

OBEDIENCE TRIAL #1 - Saturday, March 21st - Judge: Ms. D. MacKenzie - RING 4 - 9:00 a.m.	
1 Pre-Novice	1017
3 Novice A	1014, 1015, 1020
4 Novice B	1011, 1012, 1013, 1016
2 Open HB	1003, 1004
1 Open 18A	1006
1 Open 18B	1001
2 Utility A	1007, 1010
OBEDIENCE TRIAL #2 - Saturday, March 21st - Judge: Ms. M. Monteith RING 5 - Follows Rally Trial #1	
2 Pre-Novice	1017, 1018
3 Novice A	1014, 1015, 1020
4 Novice B	1011, 1012, 1013, 1016
1 Novice-Intermediate	1008
3 Open HB	1003, 1004, 1009
1 Open 18A	1002
1 Open 18B	1001
1 Utility A	1007
OBEDIENCE TRIAL #3 - Sunday, March 22nd - Judge: Ms. D. MacKenzie - RING 4 - 9:00 a.m.	
2 Pre-Novice	1017, 1019
3 Novice A	1014, 1015, 1020
4 Novice B	1011, 1012, 1013, 1016
1 Open HA	1005
2 Open HB	1003, 1004
1 Open 18A	1002
1 Open 18B	1001
2 Utility A	1007, 1010
OBEDIENCE TRIAL #4 - Sunday, March 22nd - Judge: Ms. M. Monteith RING 5 - Follows Rally Trial #3	
2 Pre-Novice	1017, 1019
2 Novice A	1014, 1015
3 Novice B	1011, 1012, 1013
1 Novice-Intermediate	1008
3 Open HB	1003, 1004, 1009
1 Open 18A	1006
1 Open 18B	1001
1 Utility A	1007

RALLY TRIALS

RALLY TRIAL #1 - Saturday, March 21st - Judge: Ms. M. Monteith - RING 5 - 9:00 a.m.	
3 Master	2001, 2003, 2006
4 Excellent B	2001, 2003, 2006, 2009
4 Advanced B	2001, 2008, 2009, 2010
1 Advanced A	2005
5 Intermediate	2007, 2010, 2011, 2016, 2019
4 Novice B	2013, 2014, 2015, 2018
2 Novice A	2012, 2017
RALLY TRIAL #2 - Saturday, March 21st - Judge: Ms. D. MacKenzie - RING 4 - Follows Obedience Trial #1	
3 Master	2001, 2003, 2006
4 Excellent B	2001, 2002, 2003, 2006
4 Advanced B	2001, 2002, 2007, 2010
1 Advanced A	2005
3 Intermediate	2011, 2016, 2019
2 Novice B	2013, 2018
3 Novice A	2012, 2017, 2020
RALLY TRIAL #3 - Sunday, March 22nd - Judge: Ms. M. Monteith - RING 5 - 9:00 a.m.	
3 Master	2001, 2003, 2006
5 Excellent B	2001, 2002, 2003, 2006, 2009
6 Advanced B	2001, 2002, 2007, 2008, 2009, 2010
1 Advanced A	2005
3 Intermediate	2011, 2016, 2019
2 Novice B	2013, 2018
1 Novice A	2017
RALLY TRIAL #4 - Sunday, March 22nd - Judge: Ms. D. MacKenzie - RING 4 - Follows Obedience Trial #3	
3 Master	2001, 2003, 2004
3 Excellent B	2001, 2003, 2004
3 Advanced B	2001, 2007, 2010
2 Intermediate	2011, 2016
2 Novice B	2013, 2018
1 Novice A	2020

DIRECTIONS:

FROM CHATHAM

Take Highway 401 West to Windsor.

Take Manning Road North (Exit 21) towards Tecumseh.

Stay on Manning Road until intersection of Hwy 22.

Turn left onto Highway 22/Kings Hwy 2.

Hwy 22/Kings Hwy will merge into EC Row Expressway.

Exit off of EC Row Expressway onto Lauzon Parkway North (177).

Follow Lauzon Parkway and turn right on to Lauzon Line/McHugh Street (approx 4 kilometers).

Follow McHugh to the WFCU Centre on the right side of the road.

FROM DETROIT (ACCESS VIA THE AMBASSADOR BRIDGE)

Exit off Ambassador Bridge onto Huron Church Road West (Hwy 3).

Follow Huron Church Road and exit onto EC Row Expressway East.

Follow EC Row Expressway and exit onto Lauzon Parkway North (177).

Follow Lauzon Parkway and turn right onto Lauzon Line/McHugh Street (approx 4 kilometers).

Follow McHugh to the WFCU Centre on the right side of the road.

FROM DETROIT (ACCESS VIA THE WINDSOR DETROIT TUNNEL)

Exit Windsor Detroit Tunnel and turn left on to Park Street South.

At first set of lights turn left on to Ouellette Avenue (South).

Follow Ouellette Avenue to Tecumseh Road.

Turn left on to Tecumseh Road (East).

Follow Tecumseh Road and exit onto Lauzon Parkway North (177).

Follow Lauzon Parkway and turn right onto Lauzon Line/McHugh Street (approx 4 kilometres).

Follow McHugh to the WFCU Centre on the right side of the road.

--- VEHICLE ROUTES

↑ ENTRANCE FROM MAIN ROAD

ENTRANCE TO COMMUNITY CENTRE (POOL ENTRANCE) / GATE 2

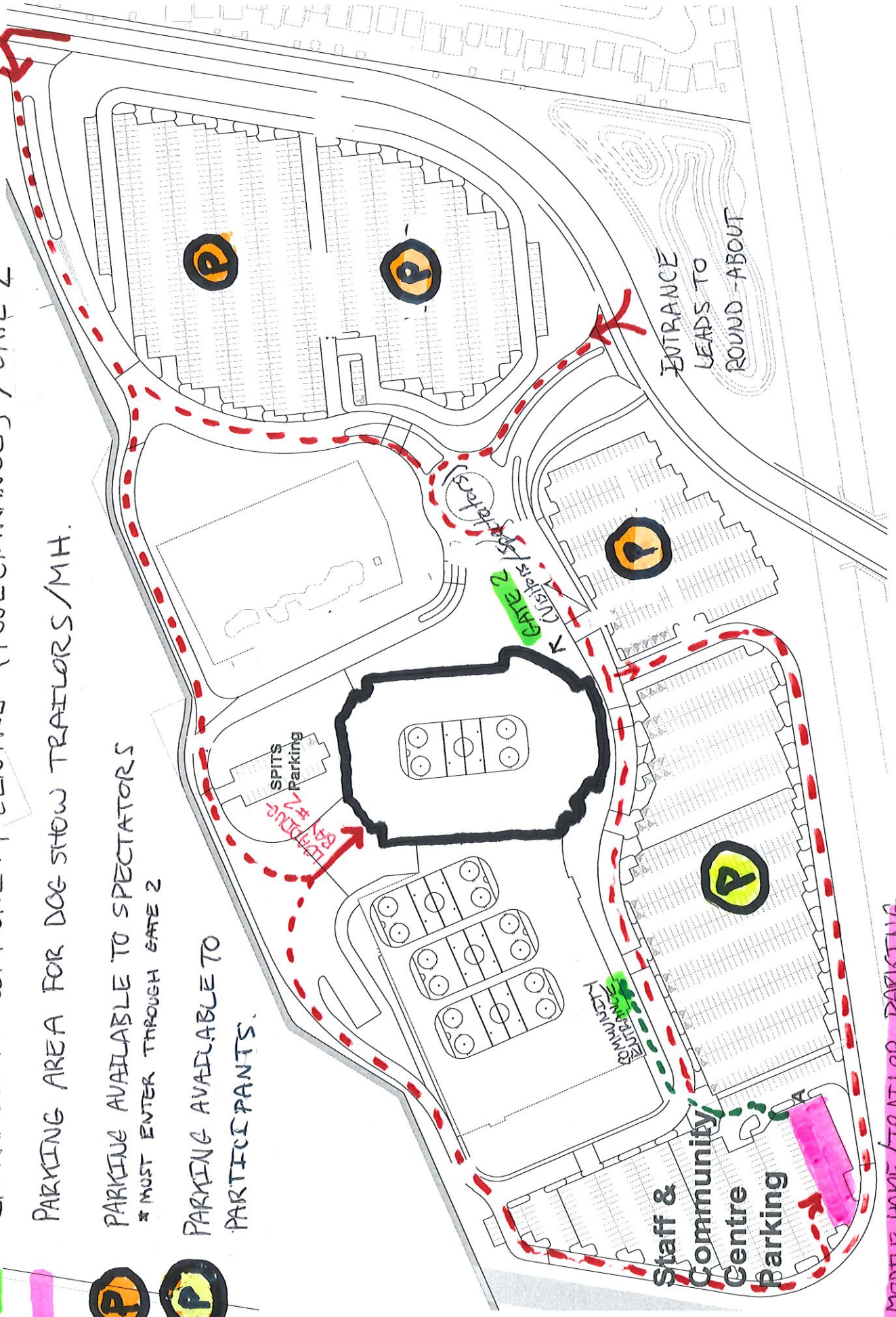
PARKING AREA FOR DOG SHOW TRAILORS / MH.

PARKING AVAILABLE TO SPECTATORS
* MUST ENTER THROUGH GATE 2

PARKING AVAILABLE TO PARTICIPANTS.

BEST ENTRANCE FOR PEOPLE WITH LARGE VEHICLES OR TRAILORS

ENTRANCE LEADS TO ROUND-ABOUT



MOBILE HOME / TRAILOR PARKING

• DOGS ARE PERMITTED IN GROOMING AREA AND THE MAIN BOWL COMPETITION SPACE

● WALKING PATH

■ COMMUNITY ENTRANCE

■ X

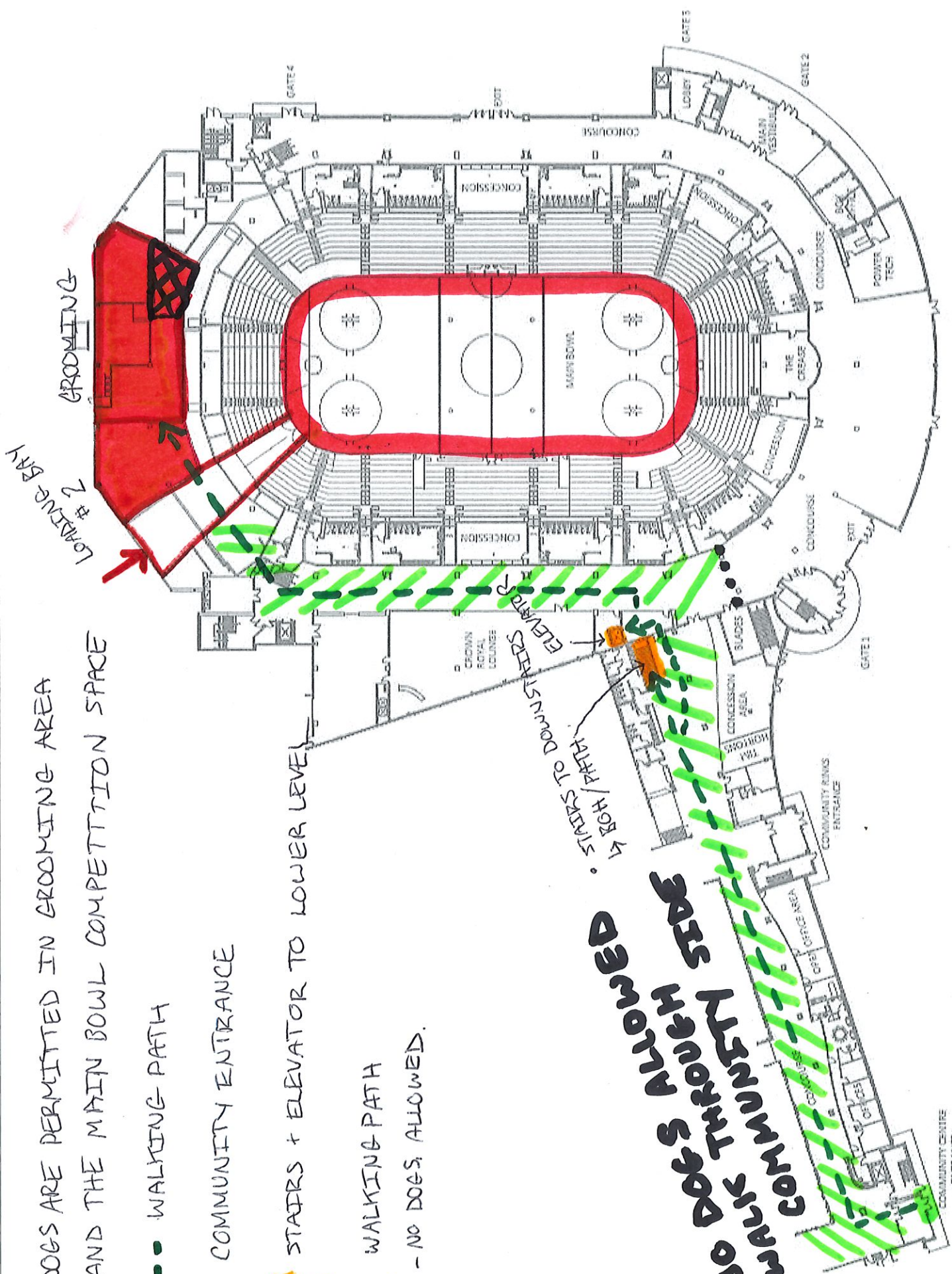
STAIRS + ELEVATOR TO LOWER LEVEL

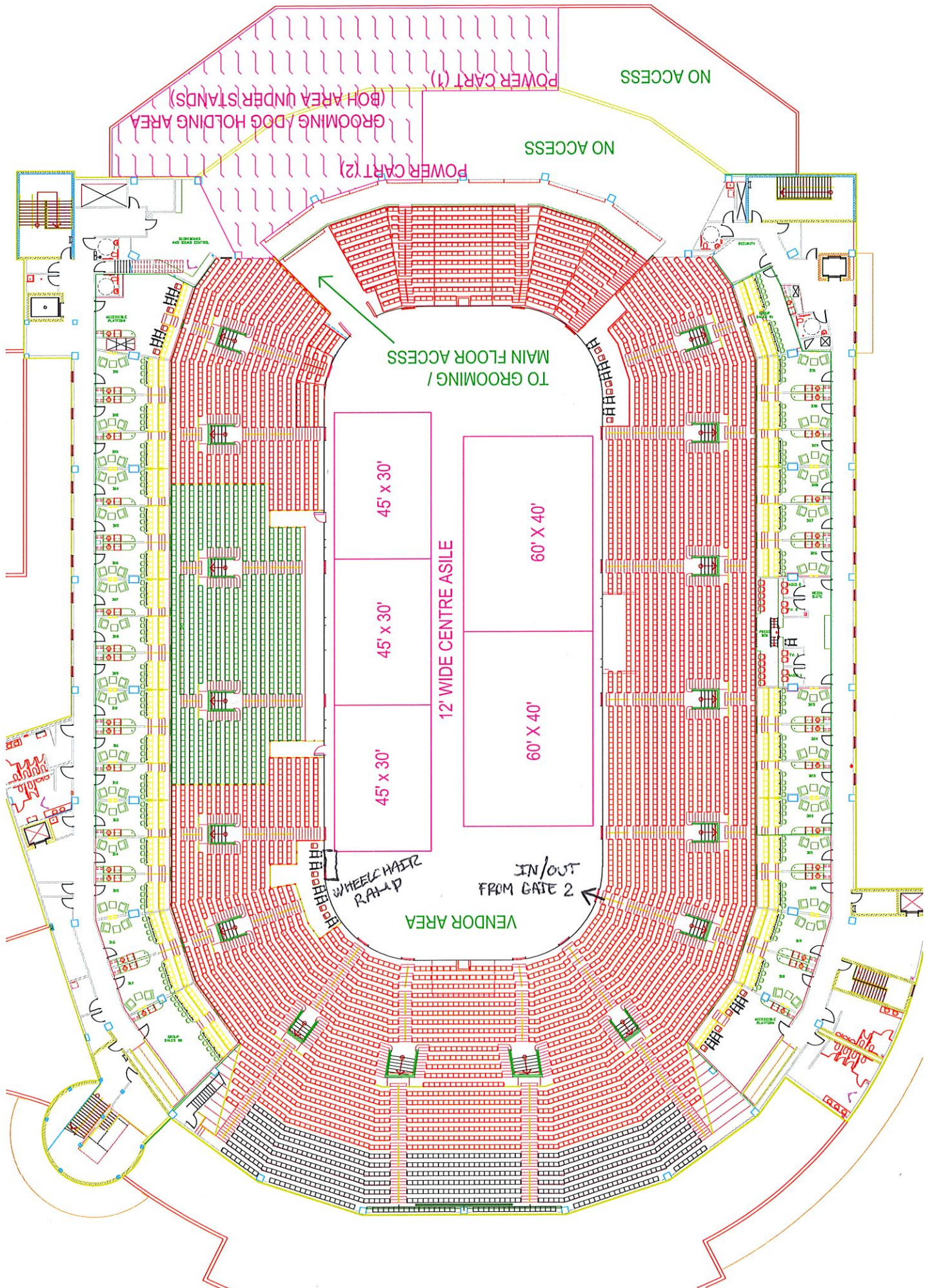
▨ WALKING PATH

- NO DOGS ALLOWED

STAIRS TO DOWNSTAIRS
ELEVATOR
STAIRS TO DOWNSTAIRS
ELEVATOR

NO DOGS ALLOWED
NO COMMUNITY STAIRS
NO COMMUNITY STAIRS





POWER CART (1)
GROOMING / DOG HOLDING AREA
(BOH AREA UNDER STANDS)

NO ACCESS

NO ACCESS

POWER CART (2)

TO GROOMING /
MAIN FLOOR ACCESS

45' x 30'

60' x 40'

45' x 30'

12' WIDE CENTRE AISLE

60' x 40'

45' x 30'

WHEELCHAIR
RAMP

IN/OUT
FROM GATE 2

VENDOR AREA