



JUDGING SCHEDULE – November 1 & 2, 2025
Sat - 2 ALL BREED OBEDIENCE TRIALS (LIMITED ENTRY)
Sun - 2 ALL BREED RALLY OBEDIENCE TRIALS (LIMITED ENTRY)
JUNIOR HANDLING OBEDIENCE – SATURDAY Only

Interior Provincial Exhibition (IPE) Horticulture Building 3371 Pleasant Valley Rd, Armstrong BC
OBEDIENCE/RALLY: INDOORS. Surface: Asphalt
Held under the rules of the Canadian Kennel Club Unbenched and Unexamined

Judges: Karen Brearley Armstrong BC – Obedience
Marla Williamson West Kelowna BC – Rally
TBA Armstrong BC Junior Handling (Obedience)

Both Obedience Trials & Both Rally Trials are FULL

Day of Trial entries accepted subject to availability. These are limited entry trials – CASH ONLY
Each judge's assignment will not exceed more than 7 hours of judging time.
Obedience & Rally ring size approximately 40' x 50' (2000 sq ft)

<p>North Okanagan Tracking & Obedience Club Executive President: Erin Moore Secretary: Sherry Correale Vice President: Alice Jantzen Treasurer: Jayne Coneybeare Directors: Joy Viel</p> <p>Trial Officials Chairperson Erin Moore Secretary/Superintendent Margaret Zacher Trial Committee Erin Moore, Jayne Coneybeare, Alice Jantzen, Joy Viel</p> <p>Veterinarian: Armstrong Veterinary Clinic, 3125 Smith Dr, Armstrong, BC 250-546-9506</p> <p>Please lock your vehicles and watch your belongings. Dogs and vehicles are left at your own risk. North Okanagan Tracking and Obedience Club will NOT accept responsibility for lost, stolen or damaged items.</p>	<p><u>Obedience Scheduling is based on # per hour</u> 9 Pre-Novice 8 Novice 7 Open 6 Utility</p> <p><u>Rally Scheduling is based on</u> 15 dogs per hour.</p> <p>Please allow for absentees as this will affect the judging schedule. Judging will not begin prior to the hour scheduled</p> <p align="center">Please check in with the ring stewards on arrival.</p> <p align="center">Armbands available at Secretary Table.</p> <p>Crating is available in the building.</p> <p>Rally Drop In from Noon to 2 on Friday Oct 31. Contact Sherry Correale at notocsecretary@gmail.com</p> <p>RV PARKING Overnight RV camping will be available at the trial site with POWER HOOKUPS ONLY for \$30/night Contact: Jayne Coneybeare jayneco@telus.net All camping spots must be prepaid E-transfer to: notoctreasurer@gmail.com</p>
---	--

DINNER SATURDAY NIGHT There will be a no host dinner at a local restaurant on Saturday night. Everyone invited! If you would like to join us, please contact Erin at erinmoorebc@gmail.com

Obedience Trials – Saturday – November 1-2025

Trial #1

**Ring 1 – Trial #1
Karen Brearley**

8:00 a.m. Start Time

Pre-Novice – 1
100

Novice A – 10
150 – 151 – 152 – 154 – 155
156 – 157 – 158 - 159 - 160

Novice B – 3
200 – 201 - 202

Open A – 2
250 - 251

Open B – 5
300 – 301 – 302 – 303 - 304

Utility A – 3
350 – 351 - 352

Utility B – 2
400 – 401

JR Handling Obedience
Judging to start after the completion of
Trial #1 – approx 11:30 a.m

Trial #2

**Ring 1 – Trial #2
Karen Brearley**

Judging to start after the completion of
JR Handling
Trial to start after lunch at judge's discretion
but not earlier than 12:00 noon

Pre-Novice – 1
100

Novice A – 11
150 – 151 – 152 – 153 - 154
155 – 156 – 157 - 158 - 159 - 160

Novice B – 2
201 - 202

Open A – 1
251

Open B – 5
300 – 301 – 302 – 303 - 304

Utility A – 3
350 – 351 - 352

Utility B – 2
400 - 401

Exhibition Only – 450 – 451 – 452 - 453



**DAYLIGHT SAVINGS
REMINDER**
SUNDAY NOV. 2, 2025
AT 2 A.M. SET YOUR CLOCK
BACK ONE HOUR TO 1 A.M.

Rally Obedience Trials – Sunday – November 2-2025

Trial #1

**Ring 1 – Trial #1
Marla Williamson**

8:00 a.m. Start Time.

Rally Novice A - 4
500 – 501 – 502 – 503

Rally Novice B - 6
550 – 551 – 552 – 553 – 554 – 555

Rally Intermediate - 9
600 – 601 – 602 – 603 – 604 – 605
606 – 607 – 608

Rally Advance A - 8
650 – 651 – 652 – 653 – 654
655 – 656 – 657

Rally Advance B - 10
700 – 600 – 701 – 702 – 703 – 704
705 – 706 – 707 – 708

Rally Excellent B - 9
750 – 751 – 703 – 704
705 – 752 – 753 - 754 – 755

Rally Master - 6
800 – 750 – 703 - 752 – 753 – 803

Trial #2

**Ring 1 – Trial #2
Marla Williamson**

**Trial to start after lunch at judge's
discretion
but not earlier than 12:00 noon**

Rally Novice A – 4
500 – 501 – 502 - 503

Rally Novice B – 5
550 – 551 – 552 – 553 - 555

Rally Intermediate - 7
600 – 601 – 602 – 604 – 605 – 606 – 608

Rally Advance A - 8
650 – 651 – 652 – 653 – 654 – 655
656 – 657

Rally Advance B - 9
603 - 700 – 701 – 702 – 703 – 704
705 - 707 – 708

Rally Excellent B - 8
750 – 751 – 703 – 704 - 705
752 - 754 – 755

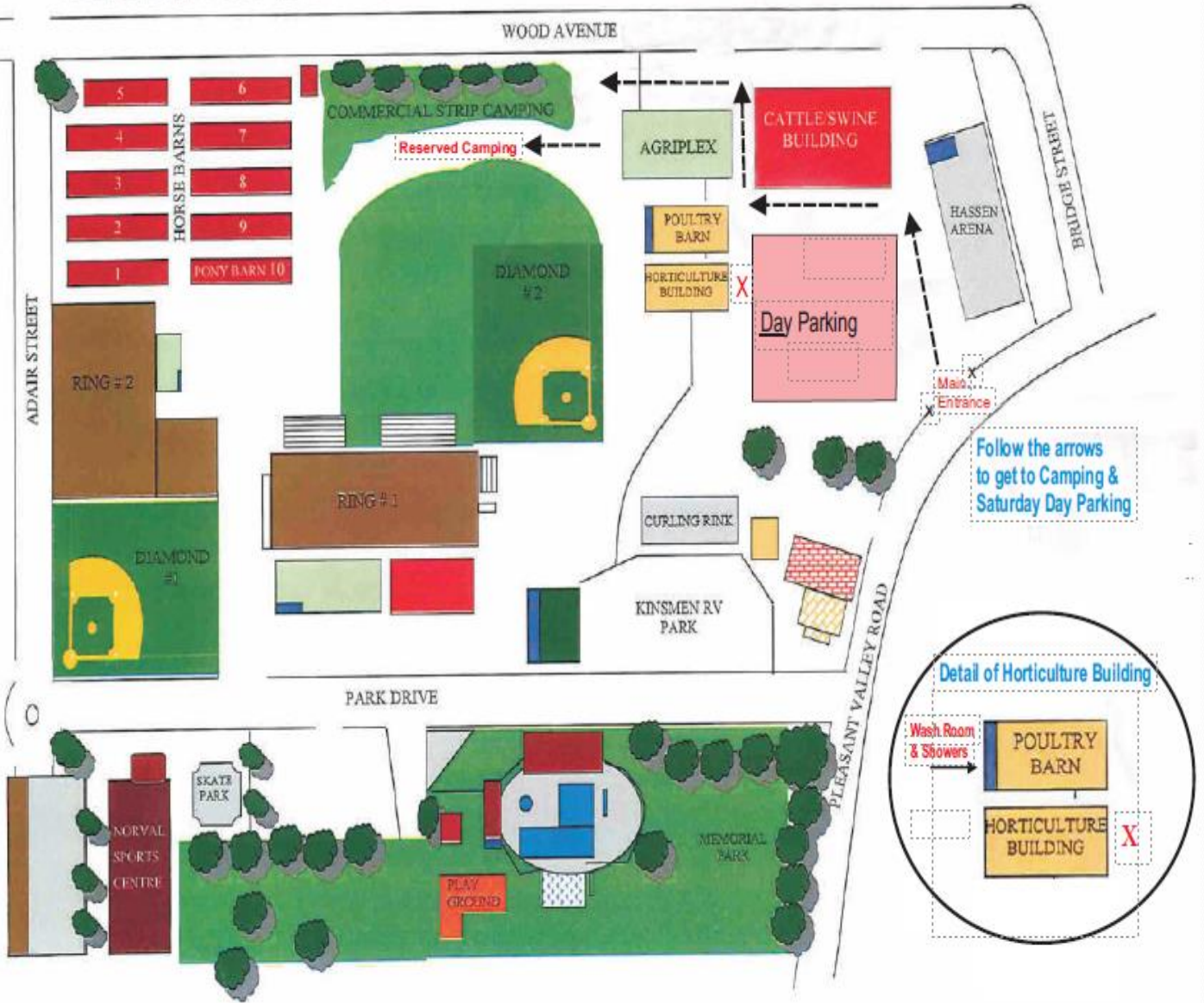
Rally Master - 7
800 – 750 – 703 - 752 – 801 – 802 - 803



Daylight Saving Time Ends

set your clocks back an hour

ARMSTRONG SPALLUMCHEEN PARKS & RECREATION GROUNDS



IPE Fair Grounds - 3371 Pleasant Valley Rd, Armstrong, BC

4.4.2 When the advertised limit (if applicable) has been reached, all remaining entries may be assigned a position (by class) on the reserve list. The person making the entry shall be notified of his position on the list. In the event that the entry of a bitch in season is withdrawn after the closing date, it may be substituted with one from the reserve list up to and including the day of the trial. At the club's discretion, if the club is notified in writing after the closing date that an entry other than a bitch in season will be absent from a trial, the entry may be substituted from the reserve list up to 24 hours prior to the trial. Fees will not be refunded for any reason other than a bitch being in season and to those on the reserve list who did not participate in the trial. Entry fees will be refunded within 10 days following the trial for those on the reserve list who did not participate in the trial.

JUNIOR OBEDIENCE COMPETITION – Entries will be taken up to 10:30 am on Saturday.