

Official Premium List

# Rocky Mountain Working Herding Club of Alberta

GROUP SPECIALTY – Working & Herding ( Groups 3 & 7 ONLY )  
REGULAR CLASSES

TWO DAYS OF GROUP SPECIALTIES: Saturday July 12, 2025 & Sunday July 13, 2025



Wet Noses Bed and Biscuit (near Calgary)  
223042 Highway 24 (#324)  
Carseland, AB

## JUDGES

**Terry Carter**  
Foothills, Alberta

**Ronald Mahon**  
St Thomas, Ontario



A service charge of 10% will be assessed. This includes entries sent online or post using a credit card or Interac for payment.

**ENTRIES CLOSE: Wednesday, June 25, 2025 – 10:00 PM MDT**

Permission has been granted by the Canadian Kennel Club  
for the holding of this event under CKC rules & regulations

Unbenched

To be held outdoors, rain or shine

Unexamined

# Rocky Mountain Working Herding Club of Alberta

## Club Officers

President: **Kim Zippel**  
Vice-President: **Debbie Haynes**  
Secretary: **Michelle Whistlecraft**  
Treasurer: **Michelle Whistlecraft**

## Show Committee

Show Chairperson: **Kim Zippel**  
Show Superintendent: **Nik Whistlecraft**  
Show Committee: **Club Officers**

## EVENT SECRETARY (to whom all entries must be sent):

### Performance Unleashed Canine Services

**Michelle Whistlecraft**  
**203 Riverwood Circle SE**  
**Calgary, AB T2C 4A8**  
**Ph: 403-620-0676**  
**pucsconf@gmail.com**

## **Official Veterinarian:**

Sundance Animal Hospital 35 Sunmills Drive SE Calgary, AB T2X 2W6 403-254-9698

## **Canadian Kennel Club:**

TBD, Executive Director, 5397 Eglinton Avenue W, Etobicoke, ON M9C 5K6 416-675-5511

## **Canadian Kennel Club Director for Alberta:**

[Lee Ann Bateman](#)

## **Canadian Kennel Club Dog Show Representative for Alberta (Conformation):**

[Tina Gaudet](#)

The show precincts are defined as within 50 feet of the designated Specialty rings.

## JUDGING ASSIGNMENTS

### **Saturday, July 12<sup>th</sup>**

**Ronald Mahon** - Group 3 & BISS  
**Terry Carter** - Group 7

### **Sunday, July 13<sup>th</sup>**

**Terry Carter** - Group 3 & BISS  
**Ronald Mahon** - Group 7

## **ENTRY FEES**

All Regular Classes	\$ 32.00
Baby Puppy (4-6 months)	\$ 15.00
Exhibition Only & Exhibition Only (4-6 months)	\$ 10.00
TCN Fee - required for any dog without an <u>Individual</u> CKC Registration Number, Miscellaneous Number or ERN (except for dogs entered in Exhibition Only)	\$ 10.50

(The above fees include CKC recording fees + 5% GST)

## **CHEQUES SHOULD BE MADE PAYABLE TO**

**Rocky Mountain Working Herding Club of Alberta**



A service charge of 10% will be assessed. This includes entries sent online or post using a credit card or Interac for payment.

**ENTRIES CLOSE: Wednesday, June 25, 2025 – 10:00 PM MDT**

**Specialty Entries may be mailed to**  
**Performance Unleashed Canine Services**  
**203 Riverwood Circle SE, Calgary, AB T2C 4A8**  
**Entries may be paid with Visa, MasterCard or American Express.**  
**Online entries can also be paid by Interac, EFT Bank Transfer or Apple Pay.**  
If paying by credit card, each entry form must include a VISA, MasterCard or American Express number -  
expiry date - printed name of card holder and authorized signature.

Cheques dated after close of entries will not be accepted. **Returned cheques & declined credit cards will be assessed a \$50.00 service charge (Conformation Show Rules and Regulations - Section 8.8).** Please do not send entries by Registered Mail. To comply with instructions issued by the Canadian Kennel Club, we will be unable to accept any entry reaching our Show Secretary after the closing time and date. **Please allow ample time for delays in the mail.**

**ATTENTION FOREIGN EXHIBITORS:** Please note that fees are due and payable in Canadian dollars ONLY. Due to consistently fluctuating currency rates, discounted cheques will not be accepted. Personal Cheques will be accepted, however, they are to be payable in Canadian funds. If you send a cheque in US funds, it must be made out for the full amount of the entry and no exchange will be refunded to the exhibitor. Please do not mark cheques "Payable in Canadian Funds" or "At Par" as they will not be cleared by the banks. To simplify the process, we urge that you purchase bank drafts or money orders payable in Canadian funds. Your understanding and cooperation is appreciated. Thank you.

NO ENTRY WILL BE ACCEPTED WITHOUT PAYMENT IN FULL. Tendering of an NSF cheque in payment of entry fees will be considered non-payment of entry fees and is an offence punishable by CKC disciplinary action and cancellation of awards.

The owner of a dog entered in this show is entirely responsible for any error in the entering of his dog, regardless of how, or by whom the entry was made. All particulars called for on the entry form must be complete. No refunds are given due to an error in entries. The club reserves the right to refuse any entry, subject to CKC rules.

**Overpayments and duplicate entries will be considered a donation to our trophy fund. Thank you!**

## **WITHDRAWAL OF ENTRIES**

**Please note:** An exhibitor has the right to withdraw an entry up to the closing date and time as published in the premium list. This may be done by telephone but written or electronic notification must be received by the Show Secretary no later than the official closing date and time. If written notification is not received by that time, the dog will remain entered in the show.

## **PRIZE LIST**

A Rosette and Prize will be offered for the following:

**Best in Specialty**  
**Best Veteran in Specialty**

**Best Puppy in Specialty**  
**Best Baby Puppy in Specialty**

A Rosette and Prize will be offered for the following in Group 3 & Group 7:

**Group 1, 2, 3, 4 Placements (in each of the groups)**  
**Puppy (in each of the groups)**  
**Veteran (in each of the groups)**  
**Baby Puppy (in each of the groups)**

A Rosette will be offered for the following in Group 3 & Group 7:

**Best of Breed for each breed (in each of the groups)**

A Ribbon will be offered for the following in each breed in Group 3 & Group 7:

**Best of Opposite Sex**  
**Best Puppy**  
**Best Veteran**  
**Best Baby Puppy**  
**Select Dog / Select Bitch**  
**Best of Winners**  
**Winners Male / Winners Female**  
**Reserve Winners Male / Reserve Winners Female**  
**1<sup>st</sup> through 4<sup>th</sup> Placings**

At the discretion of the judge, an **AWARD OF MERIT** may be given for every ten (10) dogs competing for Best of Breed. Award of Merit winners will receive a Rosette.

## **Facility**

Wet Noses is a 50-acre K9 Exclusive Facility. Dog Treats and Food will be available in the store. Dehydrated and RAW in stock. There will be a porta-potty available on site.

## **Camping**

**Limited Camping is available ON SITE. Reservations are required and can only be booked online at [www.dogshow.ca](http://www.dogshow.ca). The cost is \$20 per night.** No services - be prepared to be fully self-sufficient. Motor home generators must be vented upward, and as a courtesy to your fellow campers, generators will need to be turned off between the hours of 11:00 pm and 6:00 am. The ground is uneven; arrive prepared to level your unit. Please do not camp near nor block the gates to the specialty field nor the parking lot at Wet Noses.

## **Concession**

A small concession will be available with some limited beverage and food choices. Please plan accordingly.

## **Accommodations (please view websites for each individual Pet Policy)**

Best Western Strathmore Inn Strathmore AB 550 Hwy 1 403-934-5777  
Days Inn and Suites Strathmore AB 400 Ranch Market 403-934-1134  
Super 8 Strathmore AB 450 Westlake Road 403-934-1808

## **Benching**

Limited, free on-site benching for the specialties will be available within the show precincts in designated areas. No power is available.

## **Photographer**

A show photographer will not be available at this show. A photo area will be set up for you to take pictures of your wins.

## **Refunds**

Entry fees will **not** be refunded in the event a dog is absent, disqualified, excused by the Judge, or barred from competition by action of the Show Committee.

No entry fee will be refunded if the show cannot open or be completed by reason of riots, civil disturbances, fire, an act of God, public emergency, an act of a public enemy, strikes, Federal, Provincial or Local requirements or any other cause beyond the control of the Club.

## **CLASSIFICATIONS**

### **REGULAR CLASSES**

The following CKC classes (divided by sex; except Specials Only) will be provided:

<b>JUNIOR PUPPY</b>	Dogs between 6 months and under 9 months on day of show.
<b>SENIOR PUPPY</b>	Dogs between 9 months and under 12 months on day of show.
<b>12 - 15 MONTHS</b>	Dogs between 12 months and under 15 months on day of show.
<b>15 - 18 MONTHS</b>	Dogs between 15 months and under 18 months on day of show.
<b>CANADIAN BRED</b>	Dogs born in Canada, Champions of any country are excluded.
<b>BRED BY EXHIBITOR</b>	Dogs owned and handled in the ring by the breeder for this class, but need not handle the dog for further awards.
<b>OPEN CLASS</b>	For all dogs.
<b>VETERAN CLASS</b>	For all dogs over 7 years of age on day of show. These dogs to compete for regular placements and the winner of this class will go on to compete for BEST OF BREED (they do not compete for Winners). Dogs in this class may be spayed/neutered.
<b>SPECIALS ONLY</b>	Dogs who are Canadian Champions. A CKC Registration Number or ERN must be indicated on the entry form at time of closing.

### **NON-REGULAR CLASSES**

<b>BABY PUPPY</b>	Dogs between 4 months and under 6 months on day of show. These puppies may also compete in Sweepstakes if a 4-6 month class is offered.
<b>EXHIBITION ONLY</b>	Dogs entered in this class may not compete in any Regular class but may enter and compete in Non-Regular classes and/or Parades if provided for in this premium list.
<b>EXHIBITION ONLY (4-6 MONTHS)</b>	Puppies 4-6 months of age may be entered in Exhibition Only 4-6 Months provided the owner(s) has entered a dog in a Regular Official Class. <b><u>These Puppies may not participate in any regular, non-regular or unofficial classes or Parades but may enter in Sweepstakes only.</u></b>

## **GENERAL INFORMATION**

1. **Conformation Show Rules and Regulations** are available from the **Canadian Kennel Club** or can be viewed [online](#).
2. The Show Superintendent will be in full charge of the show which will be governed by CKC rules.
3. Entries will be acknowledged after entry closing, with receipt, judging schedule and exhibitor passes. If such acknowledgement is not received one week before the show date, please contact the Event Secretary.
4. "It shall be the duty and obligation of the show-giving club to see that a judge, club official, volunteer or any participant at an event held under these rules is not subject to indignities" – **Conformation Show Rules and Regulations** - Section 19.7.
5. We welcome all exhibitors, including persons with disabilities. If you require accommodation of a disability, please make your accommodation known to the club in advance. Please contact the show secretary by entry closing to ensure that we can do our best to accommodate your needs.
6. The show committee will use due care and diligence for the welfare of dogs and exhibitors, but will not be responsible for, or assume any liability in the event of accident, or other misfortune, to either dogs, exhibitors or patrons.
7. Exhibitors are solely responsible for the conduct or actions of their animals while they are on the show grounds.

## **TCN FEES**

A CKC TCN fee of \$10.50 (GST Incl.) Canadian or US per dog per show is payable with the entry fee if the entry of the dog does not include a CKC individual Registration number, ERN (Event Registration Number), PEN (Performance Event Number), MCN (Miscellaneous Certificate Number) or Companion Number. The Temporary Competition Number MUST be obtained from the CKC prior to entering any CKC event. TCNs will replace the previous system of entering events with dogs as "listed" and will allow dogs to temporarily participate in CKC events while they pursue permanent registration or an Event Registration Number (ERN). If a CKC registration number is received after the closing date but prior to the date of the show, this number may be added to the entry and noted in the marked catalogue. TCN fees will not be refunded.

## **ENTRY AGREEMENT**

I (we) acknowledge that I (we), all exhibitors, handlers, and patrons, know and abide by the "CKC Dog Show Rules" and that I am (we are) familiar with their content. I (we) agree that the Rocky Mountain Working Herding Club of Alberta (RMWHCA) has the right to refuse this entry for just cause, which the Club shall deem to be sufficient. In consideration of the acceptance of entries made in this specialty, and of the holding of this show and of the opportunity to have the dog judged and to win prize money, ribbons or trophies, I (we) agree to hold the Rocky Mountain Working Herding Club of Alberta, their members, directors, governors, officers, agents, superintendents, or show secretaries, and the owner or lessor of the premises and any employees of the aforementioned parties, harmless from any claim for loss or injury which may be alleged to have been caused directly or indirectly to any person or thing by the act of a dog while in or upon the show premises or grounds or near any entrance thereto, and I (we) further agree to hold the aforementioned parties harmless from any claim for loss of a dog by disappearance, theft, death or otherwise, and from any claim for damage or injury to the dog, whether such loss, disappearance, theft, damage or injury be caused or alleged to be caused by the negligence of the Club(s) or any of the parties aforementioned, or by the negligence of any other person, or any other cause or causes. I (we) hereby assume the sole responsibility for and agree to indemnify and save the aforementioned parties harmless from any and all loss and expense (including legal fees) by reason of the liability imposed by law upon any of the aforementioned parties because of bodily injuries, including death at any time resulting therefrom, sustained by any person or persons, including myself (ourselves) or on account of damage to property, arising out of or in consequence of my (our) participation in these shows and trials, howsoever such injuries, death or damage to property may be caused and whether or not the same may have been caused and whether or not the same may have alleged to have been caused by negligence of the aforementioned parties or any of their employees or agents, or any other person.

Kindly note that the Rocky Mountain Working Herding Club of Alberta, and/or its agents, may take candid photos, win photos, or videos of the show, including but not limited to, images of the exhibitors and their dogs. Such images may be published by the Rocky Mountain Working Herding Club of Alberta in print or on the Rocky Mountain Working Herding Club of Alberta social media sites without your consent. By entering the Rocky Mountain Working Herding Club of Alberta show, you waive all rights to such images and agree that the Rocky Mountain Working Herding Club of Alberta may use them for its promotional or educational purposes, and without notice or compensation to you.

## **CHAMPIONS AND CHAMPIONSHIP POINTS**

Section 1. A dog awarded WINNERS at a championship show held under these Show Rules shall be credited with a number of championship points (ranging from 0 to 5) and the determination of the number of championship points to be credited to a dog awarded WINNERS shall be provided hereunder.

Section 2. The schedule to be employed in the determination of the number of points to be allocated to a dog awarded WINNERS shall be as follows:

Dogs competing*	1	2	3 to 5	6 to 9	10 to 12	13 or more
Points allocated	0	1	2	3	4	5

\* includes the dog awarded Winners

In counting the number of eligible dogs in competition, a dog that is disqualified, dismissed, excused, or ordered from the ring by the judge shall **not** be included in the calculation for championship points.

To determine the number of championship points earned by a dog awarded WINNERS, total all the dogs in competition which the dog defeated directly or indirectly, for the highest of the following official breed awards: Winners, Best of Winners, Best of Breed or Best of Opposite Sex and then consult the schedule as set forth above.

The system provides for additional points, provided that the dog has defeated another dog, either at the breed level or at the group level, if a dog awarded WINNERS also placed in the Group, as listed hereunder.

BREEDS COMPETING AT GROUP LEVEL	PLACED FIRST	PLACED SECOND	PLACED THIRD	PLACED FOURTH
13 or more Breeds	5	4	3	2
10 to 12 Breeds	4	3	2	1
6 to 9 Breeds	3	2	1	1
5 Breeds	2	1	1	1
4 Breeds	2	1	1	0
3 Breeds	2	1	0	0
2 Breeds	1	0	0	0
1 Breed	0	0	0	0

A class dog awarded Best in Show at an all-breed championship show will be credited with five points inclusive of any points earned at the breed or group level. In no case may a dog earn more than 5 points at any single show.

### **ATTENTION ALL FOREIGN EXHIBITORS!**

All dogs that are foreign-born and foreign-owned and enter Canada for the sole purpose of entering CKC (Canadian Kennel Club) events will no longer require a CKC registration number but will require an ERN - Event Registration Number. This ERN does not register a dog with CKC for breeding purposes as defined in the Animal Pedigree Act but rather enables a foreign-owned dog to be awarded titles by the Canadian Kennel Club. Each dog must have its own number. To obtain an ERN, mail or fax a photocopy of the dog's registration certificate with certified cheque, money order, VISA or MasterCard number (expiry date, cardholder's name and signature). Provide your complete address for return of the ERN to you. ERN MUST BE APPLIED FOR WITHIN 30 DAYS OF FIRST DAY OF ENTERING A CKC EVENT. A CKC ERN registration form can be downloaded [here](#).

### **Information for US Exhibitors on entering Canada**

- To enter Canada from the States, US Citizens must show proof of identity; however, to enter back into the United States, all US Citizens age 16 or older must have a valid Passport or Approved Secure Travel Document.
- Please be aware that all dogs must have a valid rabies certificate to cross the border. A valid rabies vaccination that has been given at least 30 days prior to entry into Canada is required. Government regulations require a rabies vaccination certificate be provided for each dog. NOTE: Dogs less than three months of age do not require rabies vaccination.

**All Judging Schedules will be posted at: [www.DogShow.ca](http://www.DogShow.ca) and [www.CanuckDogs.com](http://www.CanuckDogs.com)**

**ENTRIES CLOSE: Wednesday, June 25, 2025 – 10:00 PM MDT**

---

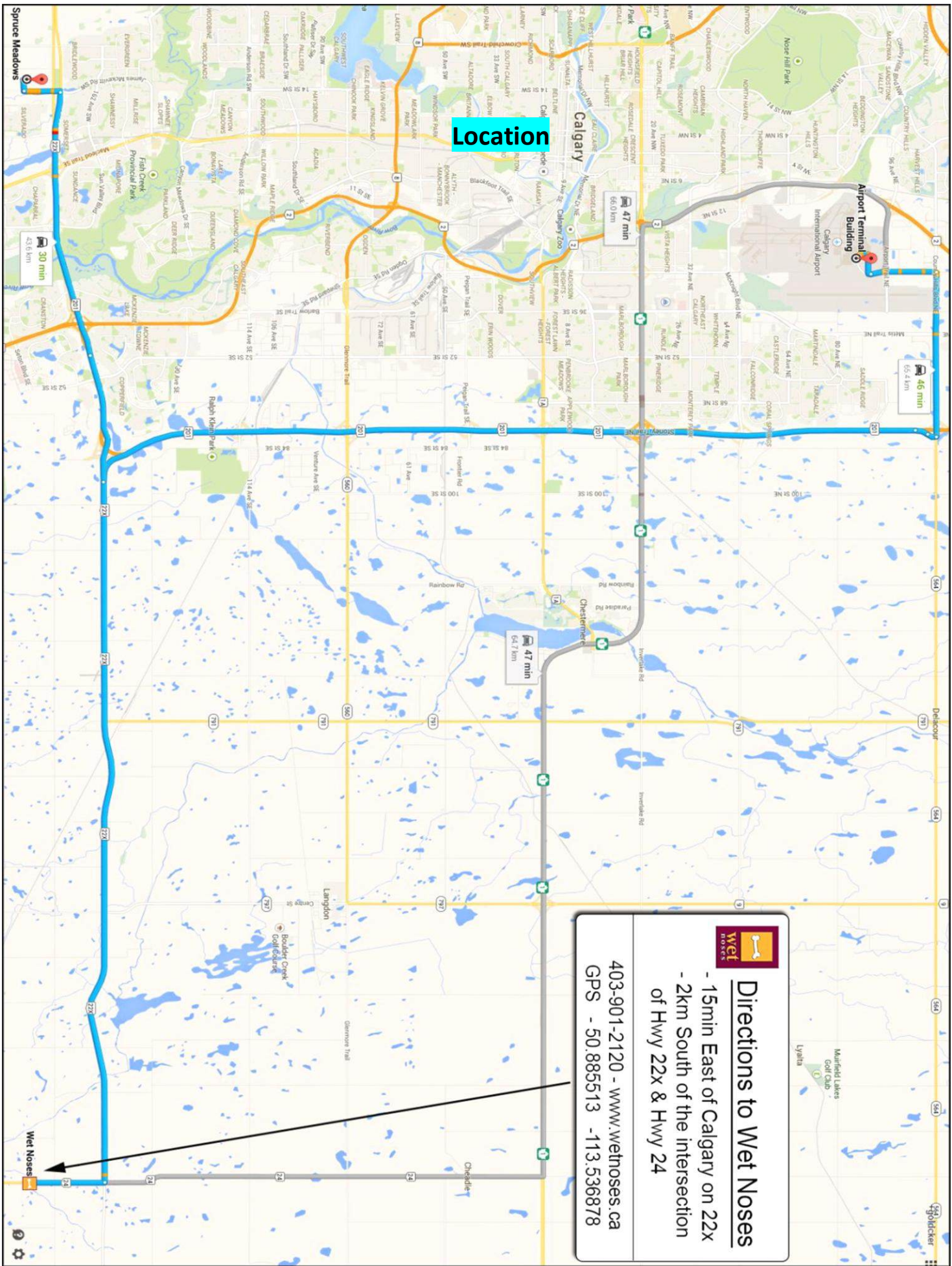
***Friday July 11 – Conformation Sanction Match  
Held by Mid West Rottweiler Club***

---

Entry fees will **not** be refunded in the event a dog is absent, disqualified, excused by the Judge, or barred from competition by action of the Show Committee.

No entry fee will be refunded if the show cannot open or be completed by reason of riots, civil disturbances, fire, an act of God, public emergency, an act of a public enemy, strikes, Federal, Provincial or Local requirements or any other cause beyond the control of the Club.







### Directions to Wet Noses

- 15min East of Calgary on 22x
- 2km South of the intersection of Hwy 22x & Hwy 24

403-901-2120 - [www.wetnoses.ca](http://www.wetnoses.ca)  
GPS - 50.885513 -113.536878



Office Use	Official Canadian Kennel Club Entry Form  <b>Rocky Mountain Working Herding Club of Alberta</b>  Group 3 & 7 Specialties  Saturday, July 12 <input type="checkbox"/>  Sunday, July 13 <input type="checkbox"/>				Office Use
					
Entry Fees		TCN Fees		Miscellaneous	
Total					
PLEASE TYPE OR PRINT CLEARLY					
Breed					Variety ___ Male ___ Female
ENTER IN THE FOLLOWING CLASSES					
<b>CONFORMATION CLASSES (CIRCLE ONE)</b>					
JUNIOR PUPPY		SENIOR PUPPY		12-15 MONTHS	
CANADIAN BRED		BRED BY EXHIBITOR		OPEN	
SPECIALS ONLY		BABY PUPPY		EXHIBITION ONLY	
				EXHIBITION (4-6 MOS)	
REGISTERED NAME OF DOG					
<b>Check One</b>		<b>Date of Birth</b>		<b>Place of Birth</b>	
----- CKC Registration # ___ CKC ERN #  Number		----- CKC TCN # ___ CKC MCN #  DD / MM / YY		----- Canada ___ Elsewhere  ----- Yes ___ No	
Breeder(s)					
Sire					
Dam					
Registered Owner(s)					
Owner Address					
City, Prov/State, Postal/Zip Code					
Agent/Handler (if any)					
Agent/Handler Address					
City, Prov/State, Postal/Zip Code					
<b><u>IDs will not be mailed – Please supply email address below for entry confirmation</u></b>					
___ VISA		___ MasterCard		___ American Express	
Card Number					Expiry Date    MM / YY
Card Holder Name (please print)					
I CERTIFY that I am the registered owner(s) of the dog or that I am the authorized agent of the owner(s) whose name(s) I have entered above and accept full responsibility for all statements made in this entry. In consideration of the acceptance of this entry, I (we) agree to be bound by the rules and regulations of the Canadian Kennel Club and by any additional rules and regulations appearing in the premium list.					
Signature of Owner or Agent					
Email					Telephone